

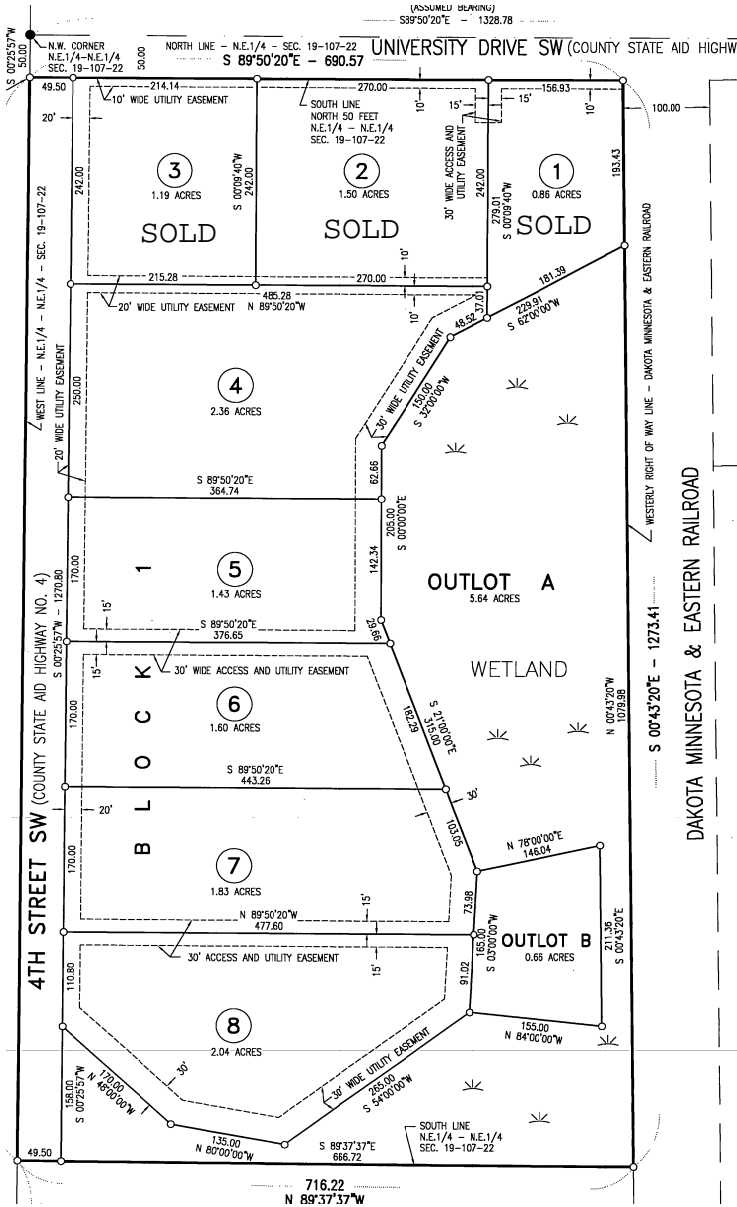
SOUTH INDUSTRIAL PARK

FREE LAND!

to qualified
Businesses Building
Structures of a Certain
Size and Creating
Employment Base

**WASECA
ECONOMIC
DEVELOPMENT
AUTHORITY**

- ZONED I-2, MODERATE INDUSTRY
- LOT SIZES .86 tO 2.36 ACRES
- EASY ACCESS TO TH-14 INTERCHANGE
- ALL UTILITIES AVAILABLE
- **TIF** or **ABATEMENT** AVAILABLE TO QUALIFIED BUSINESSES



FOR INFORMATION CALL: 507-835-9741
Send an email inquiry to kimj@ci.waseca.mn.us

ASK US ABOUT LARGER SITES!

The Waseca Economic Development Authority is an equal opportunity provider and lender.