



City of Waseca Newsletter

NO CITY-WIDE SPRING CLEAN UP

Volume 1, Issue 1

May/June 2009

Due to Current economic conditions, the City will not be holding the annual City-Wide Spring Clean Up this year. However, the County Recycling Center (Highway 13 South) does accept branches/leaves/brush, etc. They are open Monday—Friday 7:00 a.m.—3:30 p.m. and Saturdays 7:00 a.m.—Noon.

Waseca County Recycling Center will be collecting tires, appliances & electronics on Saturday, May 9th from 7:00 a.m. –12:00 noon.

This is a collection for Waseca County Residents only. Proof of County residency is required.

This collection is not open to commercial operators who

deal in the sale and/or repair of tires, appliances or electronics.

The following appliances will be accepted: Clothes washers and dryers, dishwashers, hot water heaters, furnaces, microwave ovens, ranges, stoves, freezers, refrigerators & air conditioners.

The County has the right to reject any and all appliances that do not conform to their state permit requirements. Extra fees will be charged for appliances that are not empty.

Car tires \$1.00 each, Semi small implement tires \$4.00 each & large implement tires \$10.00 each.

Electronics accepted:



TV's, computer equipment, stereo, VCR/DVD/CD players, copier, cell phone, boombox, fax machine, etc.

Monitors, TV's, video displays \$4.00, smaller items: Boombox, VCR/DVD/CD \$2.00, CPU's, Fax, Printers, copiers \$2.00.

For more information, call Waseca County Solid Waste Office at 507-835-0664.

Special points of interest:

- *There will be no Spring City wide clean up!*
- *Park Shelters Available for rent*
- *Water Park Opening soon*
- *Bike Safety Rally*
- *Summer Park and Recreation sign-up starting soon.*

Inside this issue:

Save Money this Summer	2
Peak Alert Information	2
Energy Star Rebate	2
Bicycle Safety Rally	3
Water Park Opening Soon	3
Food available at Neighborhood Service Center	4
Stormwater Pollution Prevention Program	4

Reserve A Park Shelter Now For Your Summer Events



Waseca Park Shelters are available for rent from April—October for a minimal fee. They can be rented for a minimum of 4 hours or for the whole day. Why have the mess at home.

Get out and enjoy the weather at a local park.

Make use of the bike trails and playground equipment.

If you haven't checked out the walking paths at Maplewood Park, fit that into your summer fun as well.

Contact City Hall 835-9700 to make your park reservation now.



Save Money This Summer on Energy Costs

Volunteer your central air conditioner for the load management program. Waseca Utilities will have a licensed electrician install a controller unit on your central air conditioner, at no cost to you the customer. The controller unit cycles your air conditioner compressor off for short periods of time during peak electrical usage. Residential participants in the load management program will receive an \$8.00 monthly credit on the June, July, August and September electric bills or a

total savings of \$32.00 for the year. Commercial participants will receive a \$20.00 monthly credit for the same months or a total savings of \$80.00 for the year.

If you participated in the program last year, you do not need to contact us. You will automatically receive the credit each year unless otherwise notified.

For additional information, please contact the Utility Billing Department

at 835-9718. Business hours are Monday—Friday 8:00 a.m.—4:30 p.m.



Peak Alert

You have the power to help keep electricity costs down. A **Peak Alert** means Waseca Utilities is nearing our peak electrical demand for the year. Our electrical peak is the amount of power we use during the time when our power supplier, Southern Minnesota Municipal Power Agency (SMMPA) experiences their annual peak. This peak usually occurs on very hot days during the months of June through September between 11:00 a.m. and 7:00 p.m. Monday—Friday. Waseca Utilities will announce a **Peak Alert** by radio and televi-

sion announcements.

By helping to reduce our peak electrical demand, you can help keep electricity rates low. Some energy saving suggestions are: Set air conditioner to 78 degrees, delay running the dishwasher and clothes washer until after 7:00 p.m., turn off excessive lights and close curtains and draperies. Please conserve energy and keep your electrical usage to a minimum by using major electrical appliances before 11:00 a.m. or after 7:00 p.m. on **Peak Alert Days**.



Energy Star Rebate



Waseca Electric customers can qualify for a rebate by purchasing Energy Star appliances and compact fluorescent bulbs in 2009. This program is available for products purchased only in 2009. By purchasing energy efficient products, including a central air conditioner, refrigerator, dishwasher, clothes washer, freezer, ceiling fan, window air conditioner, dehumidifier, Energy Star rated fixtures or compact fluorescent

bulbs, you are conserving energy, saving money and helping to protect the environment.

An Energy Star rebate application and/or a compact fluorescent bulb/fixture coupon are available by contacting Waseca Utilities at 835-9718 Monday—Friday 8:00—4:30 p.m.





Bicycle Safety Rally



The Bicycle Safety Rally will be held Wednesday, May 13th at the Waseca County Fairgrounds from 3-7 p.m. Bike Helmets are \$8.00 each.

Bike Obstacle Course: Created and staffed by Waseca Police Officers and Reserves, this event is very popular with kids of all ages. The course simulates street conditions. Bring your bike!

popular with kids of all ages. The course simulates street conditions. Bring your bike!

Mechanical Safety Checks: Get your bike inspected to make sure it's running safely and efficiently.

Drop Off Your Old Helmets: We will be providing a drop off for old helmets to be destroyed at no cost!

Helmets should be replaced when the fit is incorrect or when the safety has been compromised from being dropped, thrown, or in an accident.

Prizes: Register to win a number of great prizes—even bikes!!

Important note: In order to protect you, your helmet needs to be worn properly. Educate yourself on how to fit and

wear your helmet for the best possible protection.

Bike helmets only recommended for children over the age of one year.

No early sales and all sales are final.

The Owatonna Sky Diver Club will perform a demonstration jump at 5:00 p.m. at the fairgrounds! (Weather permitting)

The event is sponsored in part by the Waseca Police Department, Waseca Police Reserves, Waseca County News, Wells Fargo, Wal-Mart, AM-1170 KOWZ & KRUE 92.

Waseca Water Park Opening Soon!

The Waseca Water Park will open on Sunday, May 31, 2009 at noon! Cost will remain at \$5.00 per person and punch cards are available at the front desk of City Hall.

The Water Park is also available for private use for family reunions, birthday parties or company picnics. Contact Sara Heyer, Water Park Manager, if you are interested. 835-9700.

The 2nd Annual Father's Day Beach Blast will be on Sunday, June 21st.

The RADZOO will be at the Water park on Saturday, June 20th at 9:00 a.m. Cost is \$3.00 per person.

Registration is ongoing at City Hall for all summer water park programs including swimming lessons. The RADZOO and the new SCUBA certification course are new this year.



Summer Recreation Community Education Brochure



The Community Education brochure was released on April 25th and registration has begun for Summer Recreation. Be sure to register soon to take advantage of Early Bird Rates on many of your favorite programs. Also, look for new programming such as QuickStart Tennis for youth entering grades 1 & 2, as well as many more great summer recreation programs.

Any questions regarding specific programming, contact Mary Jo Knudson at 837-5472 or the Community Education Office at 835-5626.



Water Utility Annual Consumer Confidence Report

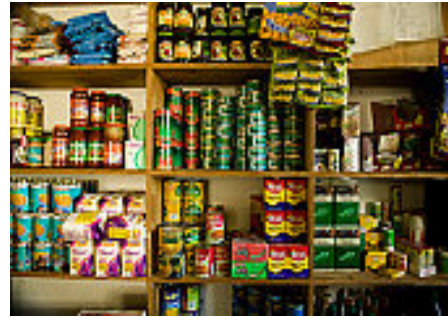
The Water Utility Annual Consumer Confidence Report, as mandated by the Environmental Protection Agency (EPA), will be included as an insert with the June utility bill. This report provides water quality information about the drinking water that the City Water Utility delivers to your home and business.

If you have any questions regarding this report, please call the Utilities Director at City hall at 835-9718.

Fresh clean drinking water is yours to use whenever you need it, but not to waste. It's too valuable. Remember that a little effort and a little common sense will make a big difference.



Message From Your Local Emergency Food Shelf



The Waseca Area Neighborhood Service Center Food Shelf has a lot to give to all who need food.

Please be aware that due to the generosity of individuals, business and churches in our community our shelves are full!

If you are in need, please stop down to the Center.

Welcome Services for you!

Newcomers: Be sure to call Welcome Services for your free Welcome Packet filled with gift cards from local businesses and civic information. Call 888-923-4916 or 507-338-4916.



City of Waseca Storm Water

The City of Waseca has been designated as a MS4 (Municipal Separate Storm Sewer System) by the Minnesota Pollution Control Agency. As a result of this designation, the City is required by State and Federal laws to operate the storm sewer system with respect to a ND PES (National Pollutant Discharge Elimination System) permit and an accompanying SWPPP (Storm Water Pollution Prevention Program). This document identifies and outlines numerous programs and activities that help the City and its citizens minimize

storm water pollution and its effects on the environment.

Additional information and educational handouts regarding the City's storm water programs are available at City Hall and on the City's website www.ci.waseca.mn.us.

Urgent issues regarding storm water can be directed to the Storm

Water Complaint Hotline at 835-9730.

City of **WASECA**
Engineering Department

STORMWATER POLLUTION PREVENTION PROGRAM

**Stormwater Hotline:
1.507.835.9730**

