

SOUTH INDUSTRIAL PARK

WASECA, MINNESOTA

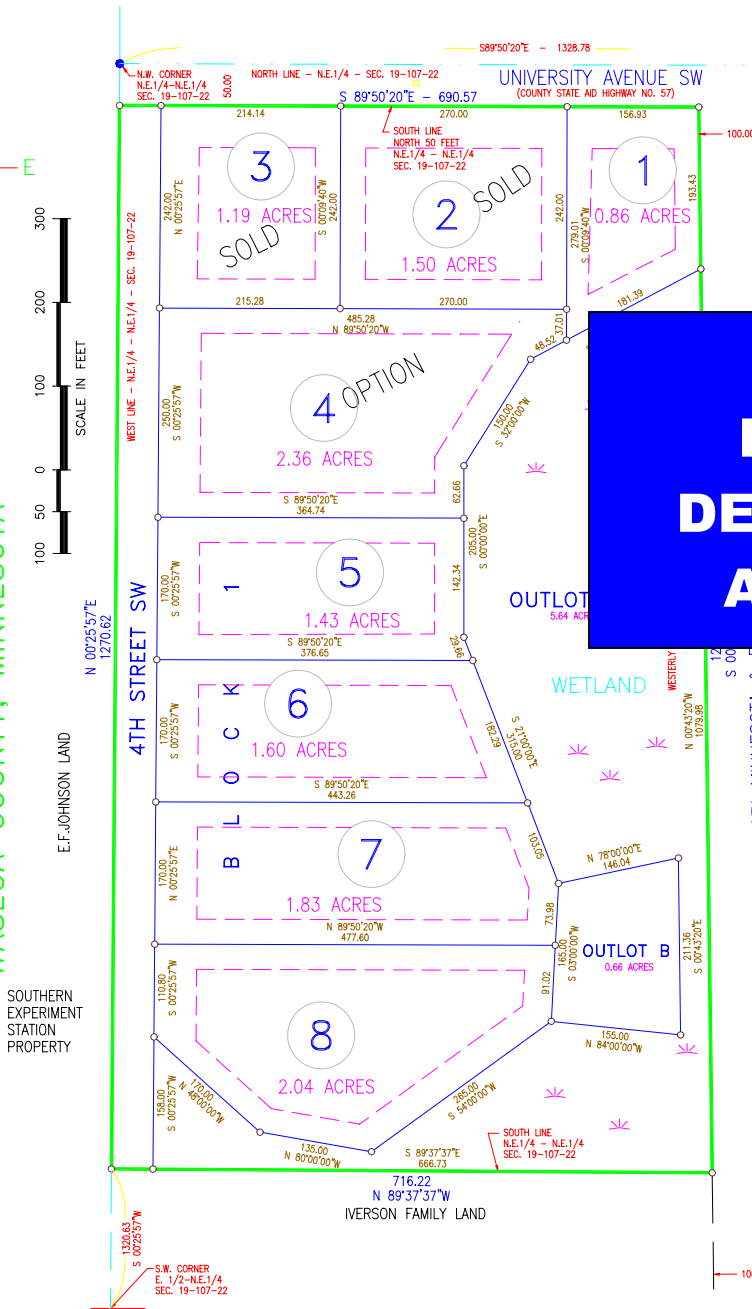
FREE LAND!

(to qualified businesses building structures of a certain size and creating employment base)

WASECA ECONOMIC DEVELOPMENT AUTHORITY

- ZONED I-2, MODERATE INDUSTRY
- LOT SIZES .86 TO 2.36 ACRES
- ALL UTILITIES AVAILABLE
- TIF AND ABATEMENT AVAILABLE TO QUALIFIED BUSINESSES
- SITE PLANNING SERVICES AVAILABLE

SOUTH INDUSTRIAL PARK
CITY OF WASECA
WASECA COUNTY, MINNESOTA



FOR INFORMATION CALL: 507-835-9741

Send an email inquiry to markl@city.waseca.com

ASK US ABOUT LARGER SITES!

4th STREET SW