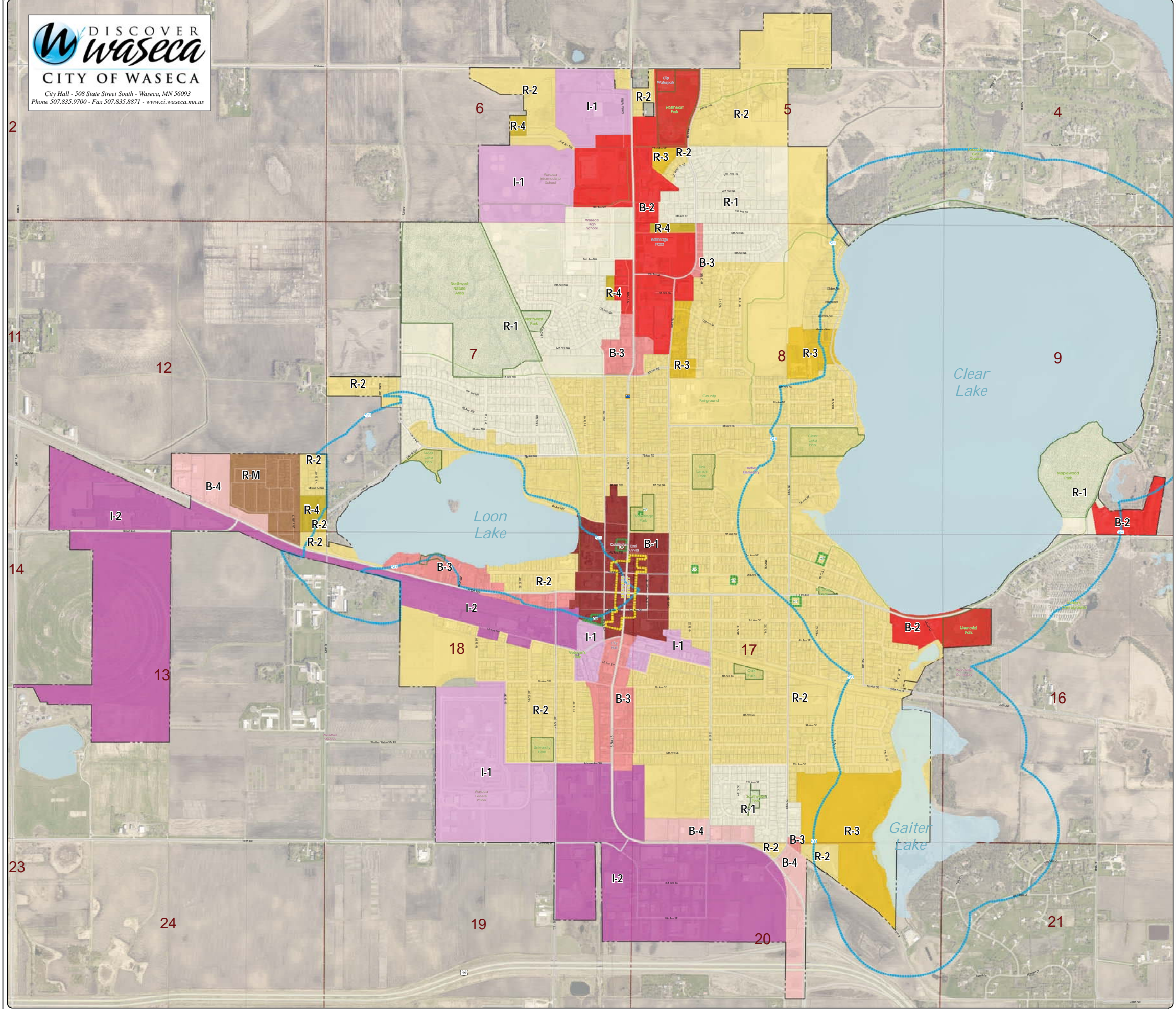


# ZONING



DISCOVER  
**waseca**  
CITY OF WASECA

City Hall - 508 State Street South - Waseca, MN 56093  
Phone 507.833.9700 - Fax 507.833.8871 - [www.ci.waseca.mn.us](http://www.ci.waseca.mn.us)



- Commerical

B-1

Central Business District

B-2

Community Retail and Service Business District

B-3

Neighborhood Transition Business District

B-4

Regional Retail and Service Business District

Industrial

I-1

Limited Industry District

I-2

Moderate Industry District

Residential

R-1

Suburban Residential District

R-2

Urban Residential District

R-3

Multi-Family Low & Medium Density District

R-4

Multi-Family High Density District

R-M

Manufactured Home Community District

Overlays

SH

Shoreland Overlay District

HP

Heritage Preservation Overlay District

Downtown Historic District
- Administrative

Section Line

City Boundary

Parcel Boundary

Park Boundary

Lakes

Trails

The data represented on this document is neither a legally recorded map nor a survey, and is intended for reference purposes only. The information presented has not been verified and neither the City of Waseca, nor its employees or agents makes any representation as to the accuracy of the features and data presented here within. This map was created through the use of several city, county, state, and federal sources. For specific information regarding this map or to report errors or omissions, contact the City of Waseca Engineering Department. Map #C1001-1 Printed 10/30/2020