



**City of Waseca 2020 Pavement
Management Analysis Summary
Report**

August 19, 2020

Prepared for:

City of Waseca, MN

Prepared by:

Stantec Consulting Services Inc.
1000 Young Street, Suite 470
Tonawanda, NY 14150



CITY OF WASECA 2020 PAVEMENT MANAGEMENT ANALYSIS SUMMARY REPORT

This document entitled City of Waseca 2020 Pavement Management Analysis Summary Report was prepared by Stantec Consulting Services Inc. ("Stantec") for the account of City of Waseca (the "Client"). Any reliance on this document by any third party is strictly prohibited. The material in it reflects Stantec's professional judgment in light of the scope, schedule and other limitations stated in the document and in the contract between Stantec and the Client. The opinions in the document are based on conditions and information existing at the time the document was published and do not take into account any subsequent changes. In preparing the document, Stantec did not verify information supplied to it by others. Any use which a third party makes of this document is the responsibility of such third party. Such third party agrees that Stantec shall not be responsible for costs or damages of any kind, if any, suffered by it or any other third party as a result of decisions made or actions taken based on this document.

Prepared by  _____
(signature)

Fred Stephenson

Reviewed by  _____
(signature)

Gabriele Cimini



Table of Contents

1.0	PROJECT OVERVIEW	1.1
2.0	PAVEMENT CONDITION DATA COLLECTION	2.1
2.1	ROUGHNESS AND RUTTING	2.1
2.2	LASER ROAD IMAGING SYSTEM (LRIS)	2.1
2.2.1	Distress Rating Protocols	2.2
3.0	PRESENT STATUS ANALYSIS	3.1
3.1	ROUGHNESS – RIDING COMFORT INDEX (RCI)	3.1
3.2	PAVEMENT CONDITION INDEX (PCI)	3.3
3.3	PRESENT STATUS	3.7
4.0	REHABILITATION NEEDS AND BUDGET ANALYSIS	4.1
4.1	MAINTENANCE AND REHABILITATION NEEDS	4.1
4.2	BUDGET IMPACTS ON OVERALL CONDITION	4.2
5.0	SUMMARY OF FINDINGS	5.1

LIST OF TABLES

Table 2.1: ASTM D6433 Distress Types	2.2
Table 3.1: PCI Condition Category	3.3
Table 3.2: PCI Level of Service Category	3.4
Table 4.1: PCI Treatment Categories	4.1
Table 4.2: M&R Needs for Asphalt Pavements	4.2
Table 4.3: “Do Nothing” Budget Scenario	4.3
Table 4.4: “Unlimited” Budget Scenario	4.3
Table 4.5: “Maintain PCI=68” Budget Scenario	4.4
Table 4.6: “Achieve PCI=70” Budget Scenario	4.5
Table 4.7: “Current Budget” Budget Scenario	4.6

LIST OF FIGURES

Figure 3.1: IRI-RCI Correlation Model	3.1
Figure 3.2: RCI Distribution	3.2
Figure 3.3: PCI Distribution	3.8
Figure 4.1: Treatment Needs vs PCI	4.1
Figure 4.2: Budget Impacts on Network PCI	4.7

LIST OF APPENDICES

APPENDIX A	PCI DISTRIBUTION MAP	A.1
APPENDIX B	STREET LISTING	B.1



1.0 PROJECT OVERVIEW

The City of Waseca is responsible for the maintenance and rehabilitation of approximately 78 lane-miles of roads. In order to assess the current condition of the City streets, a pavement condition survey was conducted by Stantec on April 21, 2020.

The “fuel” for any pavement management analysis is the pavement condition data. Pavement distress, ride quality, and structural testing provide the important sets of data in determining the costs to maintain your road network. In addition, keeping this data up to date on an ongoing basis is the only true way of measuring how well a road network is performing over time.

To capture the pavement condition data on the City streets, Stantec utilized its Road Tester 3000 (RT3000) vehicle. The RT3000 is a fully mobile solution specifically developed to accurately and efficiently collect pavement condition data. Integrated with lasers, inertial GPS, and high-definition digital imagery, the RT3000 simultaneously collected pavement profile, rutting, and surface distress data on the City streets.

The results of the pavement condition survey were expressed in terms of two performance indicators:

- RCI (Ride Comfort Index)
- PCI (Pavement Condition Index)

Where the RCI is an indication of the pavement roughness or rideability, and the PCI provides an indication of the structural and operational condition of the road. The PCI is an industry standard evaluation of overall pavement condition.



2.0 PAVEMENT CONDITION DATA COLLECTION

2.1 ROUGHNESS AND RUTTING

The RT3000 incorporates an ASTM E950 certified Class I profiler that is configured to capture longitudinal profile measurements and International Roughness Index (IRI) determinations in both wheel paths. The collection of longitudinal profile/roughness data is fully automated.

The specialized profile measurement system, mounted on the front bumper of the RT3000 survey vehicle, employs two sensing devices:

1. **Laser height sensors** that measure the distance between the vehicle and the pavement surface, while the vehicle is traveling at posted speed or less.
2. **Accelerometers** that measure the vertical acceleration of the vehicle as it bounces in response to the pavement surface profile.



The IRI data was processed at 100ft intervals and expressed in terms of a **Ride Comfort Index (RCI)**, whereby the IRI data is correlated against people's perception of ride quality on a 0 to 100 score.

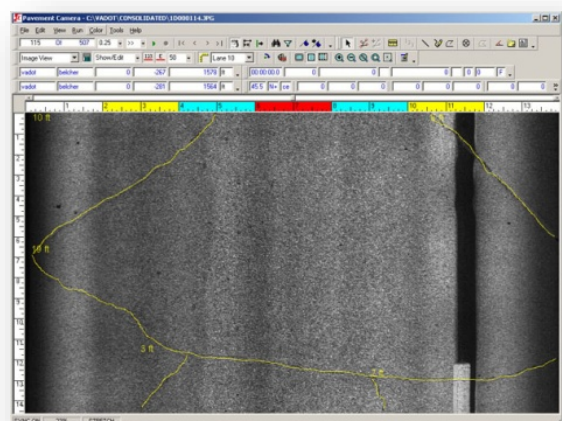
The RT3000 also measured transverse profile and rut depths, using high precision, laser-based, height-measuring sensors.

2.2 LASER ROAD IMAGING SYSTEM (LRIS)

Stantec's equipment also collected all physical pavement surface defects, utilizing the RT3000's downward imaging technology. The data was collected in accordance with ASTM D 6433 "Standard Practice for Roads and Parking Lots Pavement Conditions Index Surveys".

Stantec's LRIS system is composed of two high-resolution linescan cameras and narrow spectrum (non-visible) infrared laser illuminators that are configured to capture pavement imagery up to 13 feet in width, providing 1mm resolution, at posted traffic speeds.

The laser illumination of the pavement surface results in the removal of shadows, sun glare, and the effects of pavement texture, thus providing superior resolution of



CITY OF WASECA 2020 PAVEMENT MANAGEMENT ANALYSIS SUMMARY REPORT

August 19, 2020

the pavement surface. This technology enables the detection of cracking distresses as low as 1mm in width.

The resulting pavement images are synchronized with corresponding right-of-way images, to provide a full set of digital imageries for accurately assessing the condition of the City's roads.

2.2.1 Distress Rating Protocols

The collected pavement imagery is subsequently post-processed through Stantec's Imaging Workstation. Pavement condition is generally evaluated based on the type and amount of pavement defects or distresses. For this assignment, the following ASTM distresses shown in Table 2.1: were evaluated:

Table 2.1: ASTM D6433 Distress Types

FLEXIBLE PAVEMENTS	RIGID PAVEMENTS
<ul style="list-style-type: none">• Patching• Rippling & Shoving• Weathering/Raveling• Flushing & Bleeding• Distortion• Excessive Crown• Progressive Edge Cracking• Alligator Cracking• Potholes• Block/Map Cracking• Longitudinal Cracking• Transverse Cracking• Wheel track Rutting	<ul style="list-style-type: none">• Patching• Scaling• Weathering/Raveling• Polishing• Distortion/Frost Heave• C&D Cracking• Coarse Aggregate Loss• Potholes• Joint Sealant Loss• Linear Cracking• Transverse Cracking• Joint Spalling• Joint Faulting/Stepping

Each defect or distress was measured on the basis of two components:

- **Severity** is defined as '**How bad is the defect?**' in terms of the width or degree of wear associated with the condition. An example of a severity measurement includes the width of a crack.
- **Extent** or '**How much is there?**' relates to the quantity of the road that the defect impacts. Examples of measures used for extent would include the number or length of linear cracking, the number of potholes observed, or the pavement area affected by alligator cracking.

Each distress was measured and tagged with a linear reference and corresponding GPS coordinates. The distress data was collected continuously, processed and aggregated to compute a **Pavement Condition Index (PCI)** for each pavement section on a 0 to 100 score

Note: All roads were evaluated in a single driven lane for streets up to three lanes wide. Roads with four or more lanes, or divided by a median, will be surveyed in the outer most lane, in both directions.



3.0 PRESENT STATUS ANALYSIS

3.1 ROUGHNESS – RIDING COMFORT INDEX (RCI)

As discussed previously, one of the data collection components of the RT 3000 survey was longitudinal profile. The profile measurements were collected continuously over the entire length of each pavement management section and expressed in terms of roughness index values or IRI for both wheel paths of the driven lane.

These roughness values are then correlated to an assessment of ride quality. This subjective assessment is termed the Riding Comfort Index (RCI). The following equation was used to convert IRI measurements to RCI values:

$$RCI = 25.17 - 3.82 * \ln(IRI)$$

where: IRI = International Roughness Index from the longitudinal profile of the wheel paths.

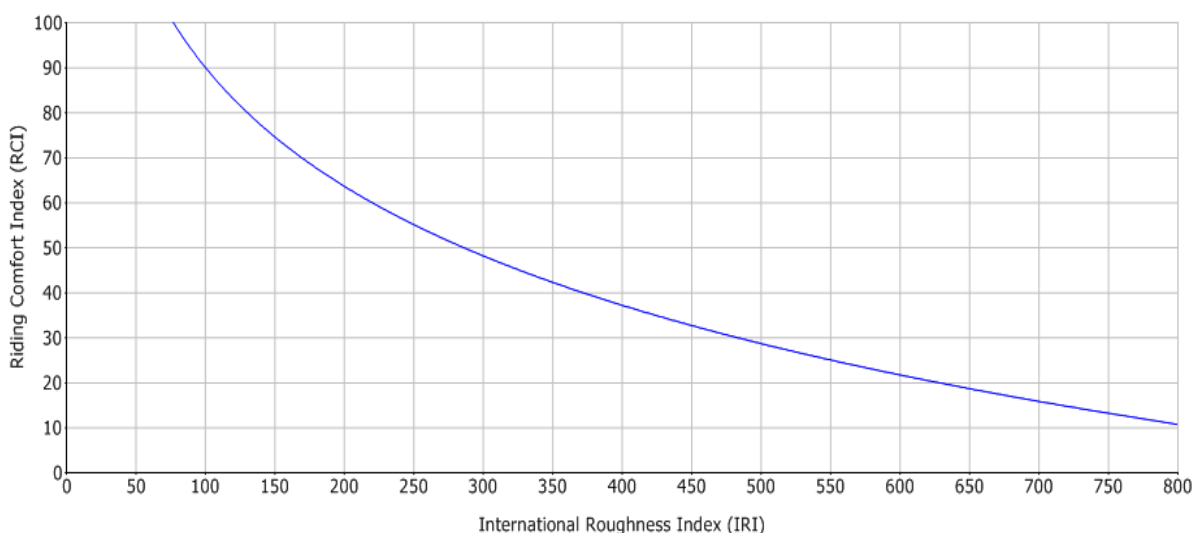


Figure 3.1: IRI-RCI Correlation Model

The RCI can vary in value from “0” to “100”. A value of “100” is indicative of an extremely smooth pavement and a value of “0” is indicative of an extremely rough pavement.

For the City of Waseca, the network average RCI (weighted by lane-miles) was determined to be **RCI=49.6**. A plot showing the distribution of RCI values is shown in Figure 3.2. Pavements with RCI values in the range of 40 to 60 are considered to have “Fair” ride quality characteristics. Overall, approximately 31.5 lane-miles or 40.5% of the network falls into this category.



CITY OF WASECA 2020 PAVEMENT MANAGEMENT ANALYSIS SUMMARY REPORT

August 19, 2020

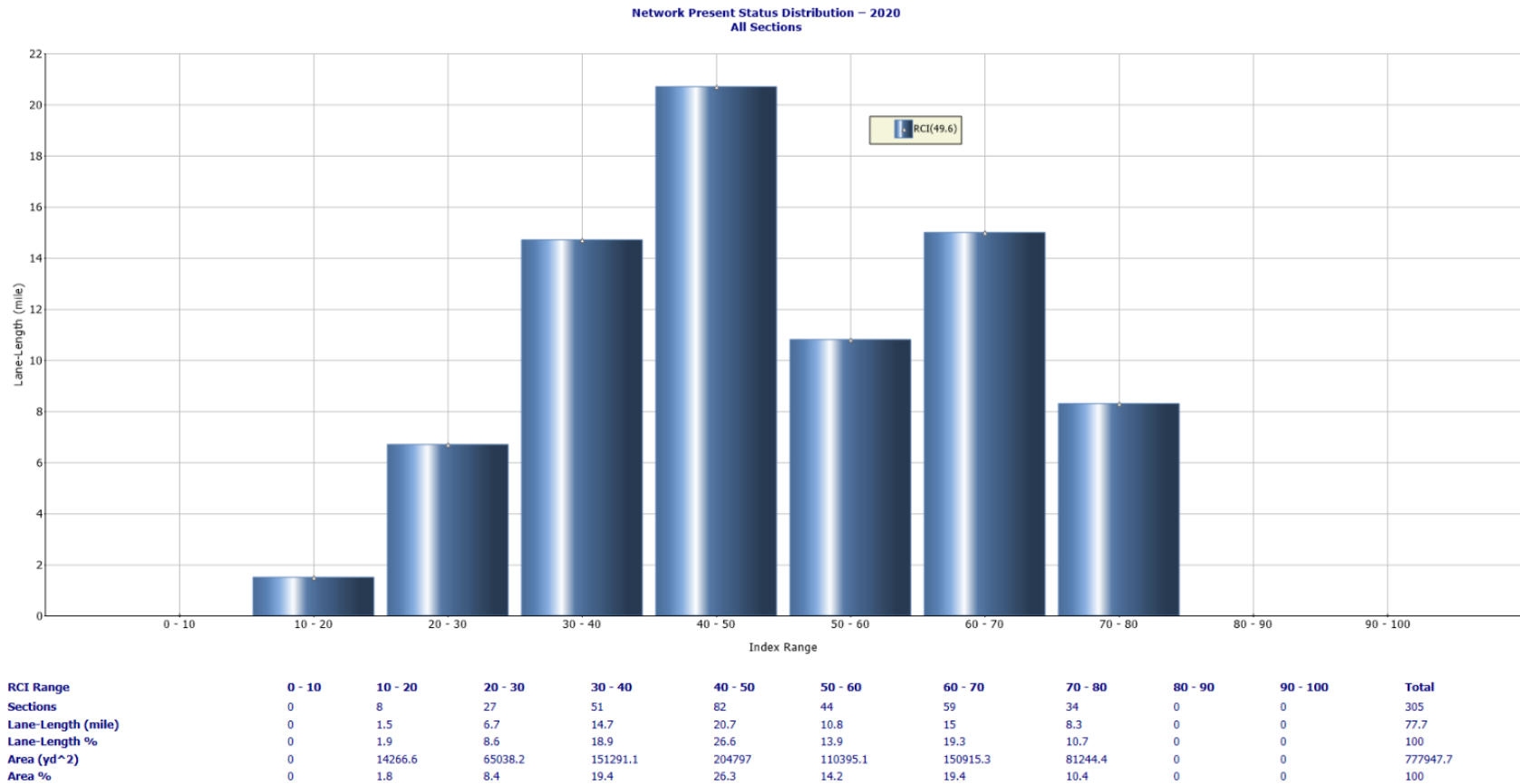


Figure 3.2: RCI Distribution



CITY OF WASECA 2020 PAVEMENT MANAGEMENT ANALYSIS SUMMARY REPORT

August 19, 2020

RCI values less than 40 are indicative of pavements with “Poor” ride quality characteristics. Approximately 22.9 lane-miles or 29.4% of the road network exhibits “Poor” ride conditions. Approximately, only 23.3 lane-miles or 30.0% of the network, have RCI values of 60 or greater, which is indicative of “Good” ride characteristics.

3.2 PAVEMENT CONDITION INDEX (PCI)

The RT 3000 surface distress survey provided a rating of the severity and extent of the various ASTM distresses for every road segment in the network. A Pavement Condition Index (PCI) score was then computed using the ASTM PCI model.

The ASTM PCI model uses a Distress Deduct methodology to compute a PCI score based on all the observed distresses. In general, the deduct model involves starting a road segment at PCI=100 assuming no distresses, and then deducting PCI points based on the severity and amount of each distress type observed. The amount of deducts that each observed distress type has on the PCI score is also weighted based on their relative influence on the overall condition and performance of a road.

For example, structural type defects, such as Alligator cracking, will have a greater influence (i.e. more deducts) on the PCI score as these defects indicate that the road is losing the ability to support the current traffic, and there is greater potential for the road to deteriorate rapidly.

As previously noted, the PCI is an industry standard in terms of quantifying pavement condition and performance. Using the PCI 0-100 scale, the pavement condition of a road can be categorized into the following ranges shown in Table 3.1.

Table 3.1: PCI Condition Category

PCI Range	Condition Category
86 - 100	Excellent
71- 85	Good
56 - 70	Fair
41 - 55	Poor
26 - 40	Very Poor
11 - 25	Serious
0 - 10	Failed



CITY OF WASECA 2020 PAVEMENT MANAGEMENT ANALYSIS SUMMARY REPORT

August 19, 2020

From a performance or “Level of Service” perspective the PCI can also be categorized into various ranges as shown in the following table.

Table 3.2: PCI Level of Service Category

PCI Range	Level of Service Category
71 - 100	Adequate
56 - 70	Degraded
0 - 55	Unsatisfactory

The following images captured on various streets in the City of Waseca provide a visual representation of varying levels of the Pavement Condition Index on asphalt roads.

PCI=86–100 (Excellent): 7th AVE SE (State Street S - 5th St SE)



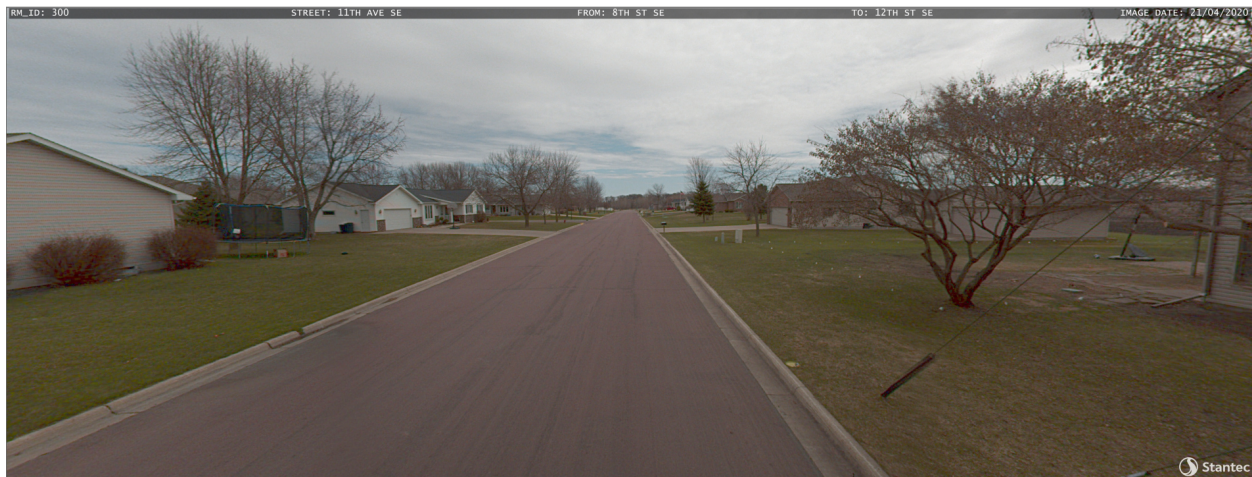
- **PCI=99**
- Recently paved. Little to no distress



CITY OF WASECA 2020 PAVEMENT MANAGEMENT ANALYSIS SUMMARY REPORT

August 19, 2020

PCI=71–85 (Good): 11th Ave SE (5th St SE – 12th St SE)



- **PCI=80**
- Recent surface treatment
- Some slight cracking reflecting through seal coat

PCI=56–70 (Fair): 11th AVE NW (10th St NW – North State St)



- **PCI=64**
- Aging surface treatment
- Seal coat wearing away,
- Increased reflective cracking
- Slight rutting



CITY OF WASECA 2020 PAVEMENT MANAGEMENT ANALYSIS SUMMARY REPORT

August 19, 2020

PCI=41–55 (Poor): 5th STREET SW (Johnson Ave – 5th Ave SW)



- **PCI=50**
- Old surface treatment
- Seal coat pretty much worn away
- Exposed slight to moderate longitudinal and transverse cracks
- Isolated areas of alligator cracking

PCI=26–40 (Very Poor): 10th AVE NE (7th St NE – 9th St NE)



- **PCI=30**
- Old patches
- Extensive moderate longitudinal and transverse cracking
- Up to 10% of area affected by alligator cracking



CITY OF WASECA 2020 PAVEMENT MANAGEMENT ANALYSIS SUMMARY REPORT

August 19, 2020

PCI=10–25 (Serious): 26th AVE NE (State St N – City Limits)



- **PCI=22**
- Extensive Edge cracking and recent patch repairs
- Up to 30% of area affected by moderate to severe alligator cracking
- Slight to moderate rutting throughout

3.3 PRESENT STATUS

The results of the pavement condition survey and subsequent PCI analysis shows that the network average PCI (weighted by lane-miles) for the City of Waseca was **PCI=65.7** at the time of the survey

The distribution of PCI scores is also shown in Figure 3.3. The average PCI of 65.7 indicates that in general, the majority of the City's street network is in "Fair" condition from a PCI perspective.

The plot shows that 18.2 lane-miles, or 23.4% of the network, is operating at a "Degraded" level of service (PCI 55-70 range). Approximately 38.8 lane-miles, or 50.0% of the network is operating at an "Adequate" level of service with PCI scores above 70. Conversely, 20.7 lane-miles, or 26.7% of the network, have PCI scores less than PCI=55 and thus operating at an "Unsatisfactory" level. A map showing the PCI distribution across the City is provided in Appendix A.



CITY OF WASECA 2020 PAVEMENT MANAGEMENT ANALYSIS SUMMARY REPORT

August 19, 2020

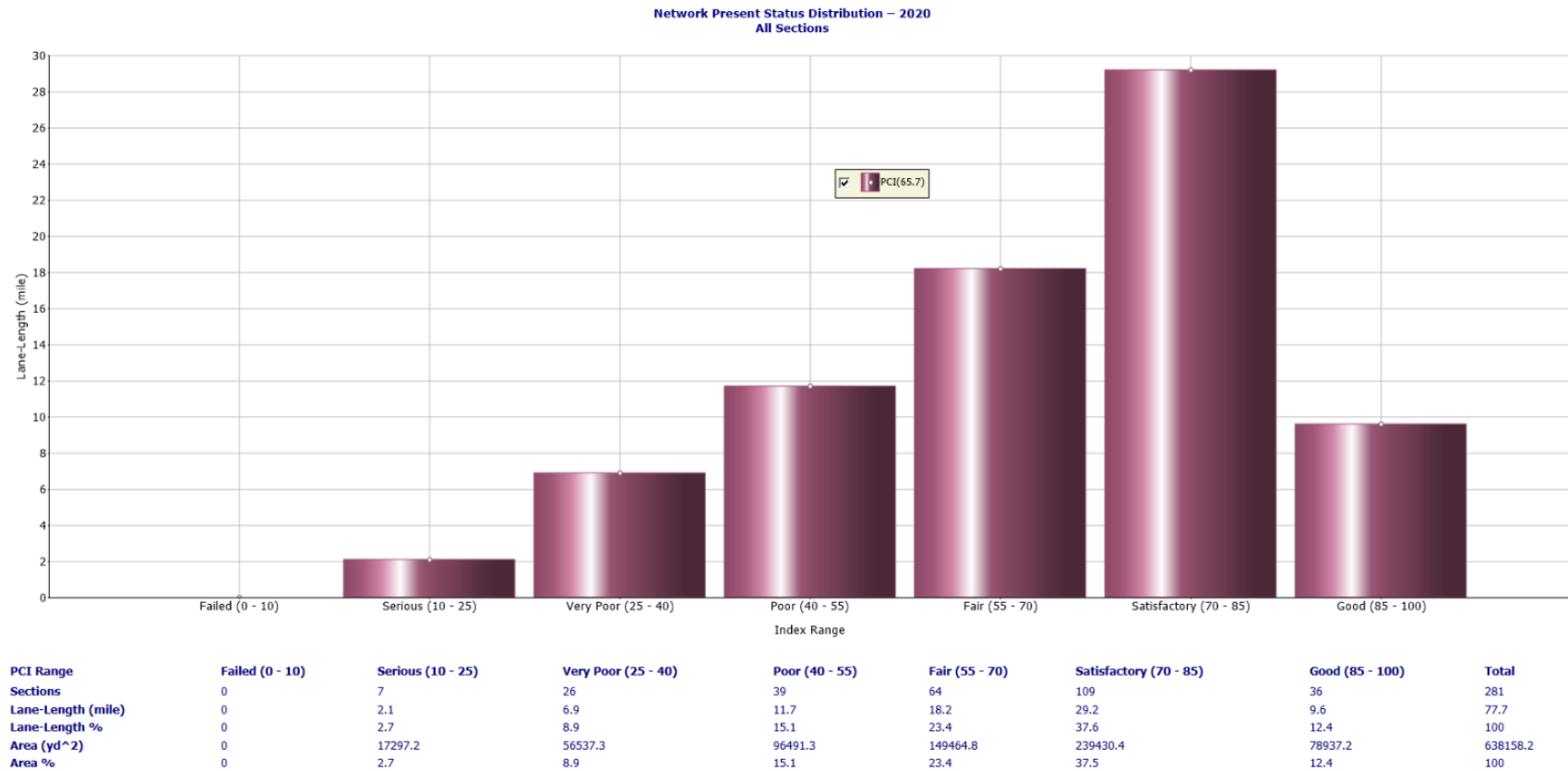


Figure 3.3: PCI Distribution



4.0 REHABILITATION NEEDS AND BUDGET ANALYSIS

4.1 MAINTENANCE AND REHABILITATION NEEDS

The PCI score of a road also provides guidance as to the type of treatment and associated costs that are required to address the current condition of a road or bring the road to an adequate level of service.

Figure 4.1 below illustrates typical treatments that are effective at given PCI ranges.

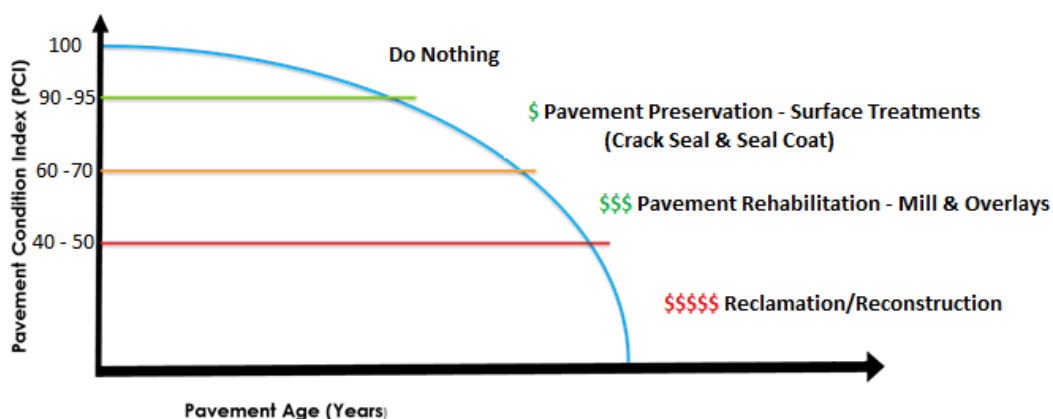


Figure 4.1: Treatment Needs vs PCI

Table 4.1 below identifies the treatment categories and average unit rates used for this analysis.

Table 4.1: PCI Treatment Categories

PCI Range	Treatment Category	Unit Rate(\$/sqyd)
95 - 100	Do Nothing	\$0.00
70 - 95	Crack Seal & Seal Coat	\$1.85
50 - 70	Mill & Overlay	\$45.00
0 - 50	Reclamation/Reconstruction	\$80.00

Using the above criteria, each treatment type and associated cost was assigned to every road segment in the network based on their respective PCI scores that were determined from the inspection.

In doing so, it was found that approximately \$22.6 Million worth of street maintenance and rehabilitation (M&R) is currently required on the City's road network.



CITY OF WASECA 2020 PAVEMENT MANAGEMENT ANALYSIS SUMMARY REPORT

August 19, 2020

The following table provides a breakdown of the various treatment needs and aggregated costs for both asphalt and concrete roads.

Table 4.2: M&R Needs for Asphalt Pavements

PCI Range	Treatment Category	Approx. Cost	Lane-miles
95 - 100	Do Nothing	\$ 0.00	3.6
70 - 95	Crack Seal & Seal Coat	\$ 690,924.00	36.8
	Concrete Crack Seal & Patch	\$ 4,521.00	0.1
50 - 70	Mill & Overlay	\$ 8,579,200	19.0
	Select Concrete Slab Replacements	\$ 1,362,590	2.7
0 - 50	Reclamation/Reconstruction	\$ 12,003,351.00	15.5
Grand Total		\$ 22,640,586.00	77.7

4.2 BUDGET IMPACTS ON OVERALL CONDITION

An analysis was conducted to estimate the impact various funding scenarios would have on the road network over time. For this assignment five budget scenarios were examined using various “what if” funding levels over a ten-year period beginning in 2021. These scenarios included:

1. “Do Nothing” Budget
2. “Unlimited” Budget
3. Maintain PCI=68
4. Increase PCI =70 in 10 Years
5. Current Budget

For each of the above ten-year scenarios a 3% annual inflation rate was applied to the treatment costs. The results of the individual budget analyses are presented in Table 4.3 to Table 4.7.

Table 4.3 provides a summary of the potential impact of a “Do Nothing” funding scenario, whereby no maintenance and rehabilitation work would be done on the City’s road network over the next ten years. This worst-case scenario results in the network condition falling from a predicted PCI in 2021 of PCI=65.3 to PCI=38.4 by 2030.



CITY OF WASECA 2020 PAVEMENT MANAGEMENT ANALYSIS SUMMARY REPORT

August 19, 2020

Table 4.3: "Do Nothing" Budget Scenario

Year	"Do Nothing" Scenario	Network Average PCI
2021	\$0	65.3
2022	\$0	62.5
2023	\$0	59.7
2024	\$0	56.8
2025	\$0	53.7
2026	\$0	50.7
2027	\$0	47.6
2028	\$0	44.5
2029	\$0	41.4
2030	\$0	38.4
Total	\$0	

Table 4.4 below provides a summary of the potential impact that an "Unlimited" funding scenario may have on the road network over the next ten years. In this scenario, the analysis applies the required treatment on every road segment in the most cost-effective year. This scenario results in a cumulative budget requirement of \$28.5 Million and that the road network will remain close to PCI=90 over the next ten years.

Table 4.4: "Unlimited" Budget Scenario

Year	"Unlimited" Annual Budget	Network Average PCI
2021	\$ 21,253,200	88.7
2022	\$ 1,983,363	90.0
2023	\$ 2,246,480	90.1
2024	\$ 1,414,525	90.7
2025	\$ 321,837	90.2
2026	\$ 66,379	89.6
2027	\$ 58,256	89.1
2028	\$ 111,829	88.5
2029	\$ 169,381	88.7
2030	\$ 923,636	91.3
Total	\$ 28,548,886	



CITY OF WASECA 2020 PAVEMENT MANAGEMENT ANALYSIS SUMMARY REPORT

August 19, 2020

Given the condition survey was conducted in April of 2020, the City identified various road work projects for 2020. Upon conclusion of these projects, the network average PCI was predicted to increase to **PCI=67.9 by 2021**. In this regard, Table 4.5 below, summarizes the budget requirements over the next ten years to maintain the network average PCI=68. This funding scenario results in approximately \$13.9 Million, or an average of \$1.39 Million annually, that would be required to maintain this PCI level until 2030.

Table 4.5: "Maintain PCI=68" Budget Scenario

Year	"Maintain PCI=68" Budget	Network Average PCI
2021	\$ 1,128,579	68.2
2022	\$ 1,545,801	68.1
2023	\$ 1,628,623	68.3
2024	\$ 1,359,317	68.1
2025	\$ 2,087,791	68.2
2026	\$ 1,774,913	68.2
2027	\$ 1,721,357	68.4
2028	\$ 1,183,633	68.2
2029	\$ 554,153	68.1
2030	\$ 964,555	68.0
Total	\$ 13,918,722	



CITY OF WASECA 2020 PAVEMENT MANAGEMENT ANALYSIS SUMMARY REPORT

August 19, 2020

Table 4.6 below provides a summary of the annual funding levels that would be required to increase the network average PCI to PCI=70 by 2030. This scenario shows that approximately \$15.9 Million, or an average of \$1.59 Million annually, would be required to achieve a PCI=70 in that ten-year time frame.

Table 4.6: “Achieve PCI=70” Budget Scenario

Year	"Achieve PCI=70" Budget	Network Average PCI
2021	\$ 1,128,579	68.2
2022	\$ 1,545,801	68.1
2023	\$ 1,628,623	68.3
2024	\$ 1,359,317	68.1
2025	\$ 2,087,791	68.2
2026	\$ 2,691,634	69.1
2027	\$ 1,504,292	69.2
2028	\$ 1,500,374	69.3
2029	\$ 585,796	69.2
2030	\$ 1,840,391	70.2
Total	\$ 15,872,598	

Finally, Table 4.7 below shows the potential impact that the City's current funding level is predicted to have on the road network condition over the next ten years. The “Current Budget” totals up to approximately \$1.18 Million on an annual basis. This budget amount is comprised of four separate funding streams which include:

1. \$100,000 Annually for Crack Seal/Seal Coat treatments
2. \$575,000 Annually (General Fund) for Overlays and Reclamation/Reconstruction projects
3. \$60,000 Annually (Enhanced Budget) to address immediate priorities
4. Up to \$445,000 Annually for Municipal State Aid (MSA) roads only. (Note: For the purposes of this analysis, the \$445,000 MSA funding stream was applied in 2021 and then \$1,335,000 was applied in 2024, 2027 and 2030)



CITY OF WASECA 2020 PAVEMENT MANAGEMENT ANALYSIS SUMMARY REPORT

August 19, 2020

Table 4.7: "Current Budget" Budget Scenario

Year	"Current Budget"	Network Average PCI
2021	\$ 1,180,000	68.4
2022	\$ 735,000	68.3
2023	\$ 735,000	67.5
2024	\$ 2,070,000	67.7
2025	\$ 735,000	66.6
2026	\$ 735,000	65.1
2027	\$ 2,070,000	65.4
2028	\$ 735,000	64.6
2029	\$ 735,000	63.6
2030	\$ 2,070,000	63.8
Total	\$ 11,800,000	

The results of all five budget scenarios are presented graphically in Figure 4.2.



CITY OF WASECA 2020 PAVEMENT MANAGEMENT ANALYSIS SUMMARY REPORT

August 19, 2020

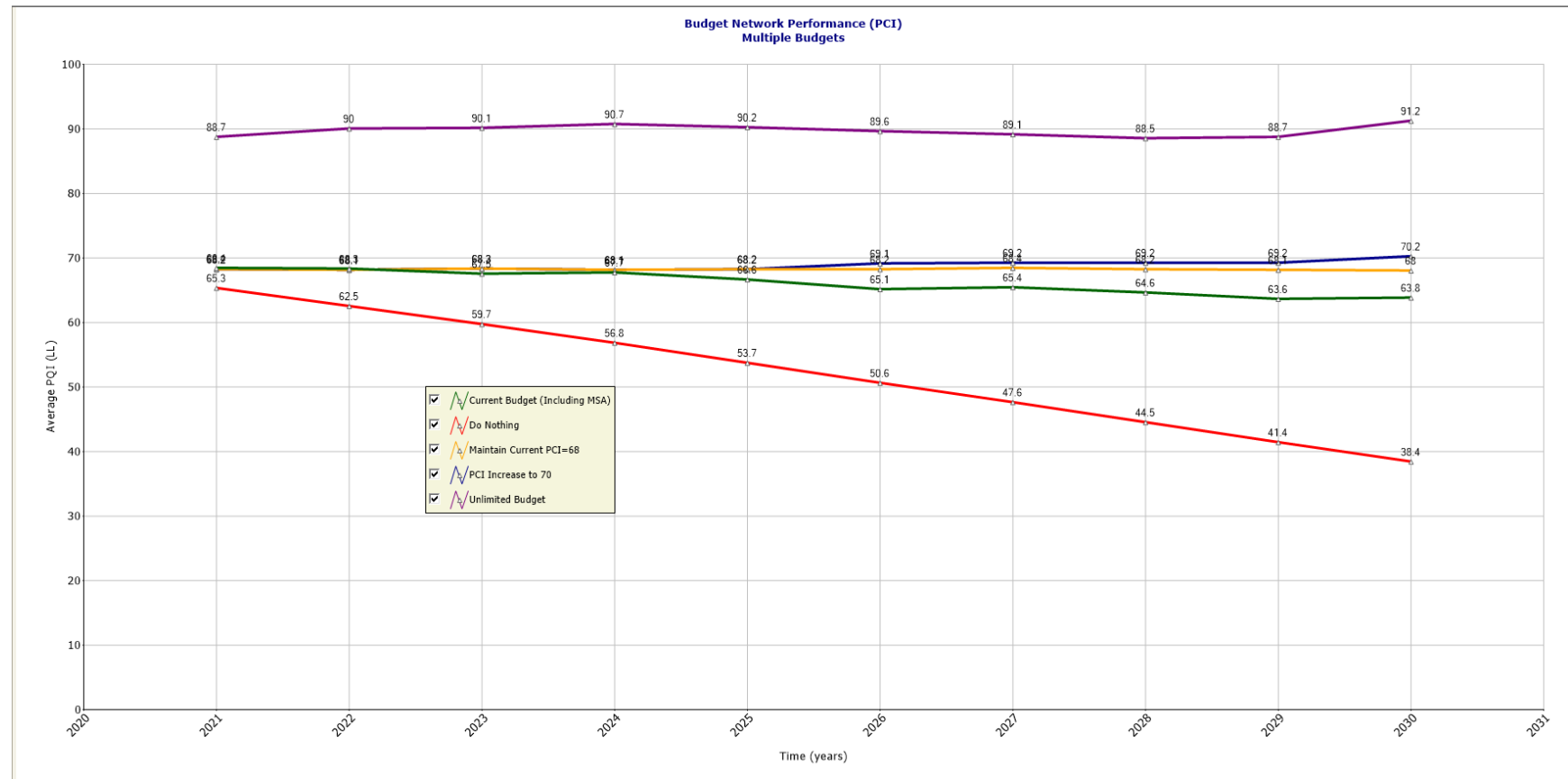


Figure 4.2: Budget Impacts on Network PCI



5.0 SUMMARY OF FINDINGS

After a pavement condition assessment on approximately 78 lane-miles of City roads, the network average Pavement Condition Index (PCI) for the City of Waseca was found to be PCI=65.7. In general terms the road network is considered to be in “Fair” condition and operating at an “Degraded” level of service based on industry standards.

The City’s current PCI is predominately influenced on the amount of load associated cracking (Alligator Cracking). This distress is indicative of roads that are showing varying levels of structural related issues. Over time, roads with structural related problems will result in a greater rate of deterioration and will require more costly treatments to bring these roads to an acceptable level of service.

The current condition of the City streets indicates that existing funding levels are insufficient to maintain the network at an “Adequate” level of service (i.e. PCI>70). Specifically, for the City of Waseca, it was estimated that approximately \$22.6 Million worth of practical maintenance and rehabilitation (M&R) treatments were required on the City streets in 2020 alone. With every passing year, without sufficient funding, the overall street network will continue to deteriorate and the costs to maintain the network will significantly increase. The analysis shows that an increase in pavement maintenance and rehabilitation funding from the “Current Budget” of approximately \$1.18 Million annually to approximately \$1.59 Million annually would raise the City’s PCI to a “Satisfactory” level of PCI>70.

As part of the City’s ongoing pavement management program, the City should continue researching and implementing lower cost Pavement Preservation techniques such as surface treatments and thin overlays on roads that are currently in “Fair” to “Good” condition. Studies have shown that proportioning a larger amount of available funding to address streets that are at a PCI>60 is more cost effective in the long run than a worst- first approach that will quickly exhaust any City budget.

Mill and Overlays should be done in conjunction with base repairs to maximize the cost effectiveness of the treatment.

Where appropriate, localized patching and base repairs can be used as Stop Gap measures to address those roads that are in the worst condition and/or require safety considerations, until such time as they can be included in Reclamation or Reconstruction projects, or a Capital works program that addresses other related road infrastructure, such as sewer and water.

It is highly recommended that pavement condition assessments be conducted every three to four years. This will allow the City to track the condition and deterioration of its streets over time using reliable data. Knowing both the current and trending conditions of the streets provides a true indication about the effectiveness of the City’s annual street maintenance and rehabilitation programs.



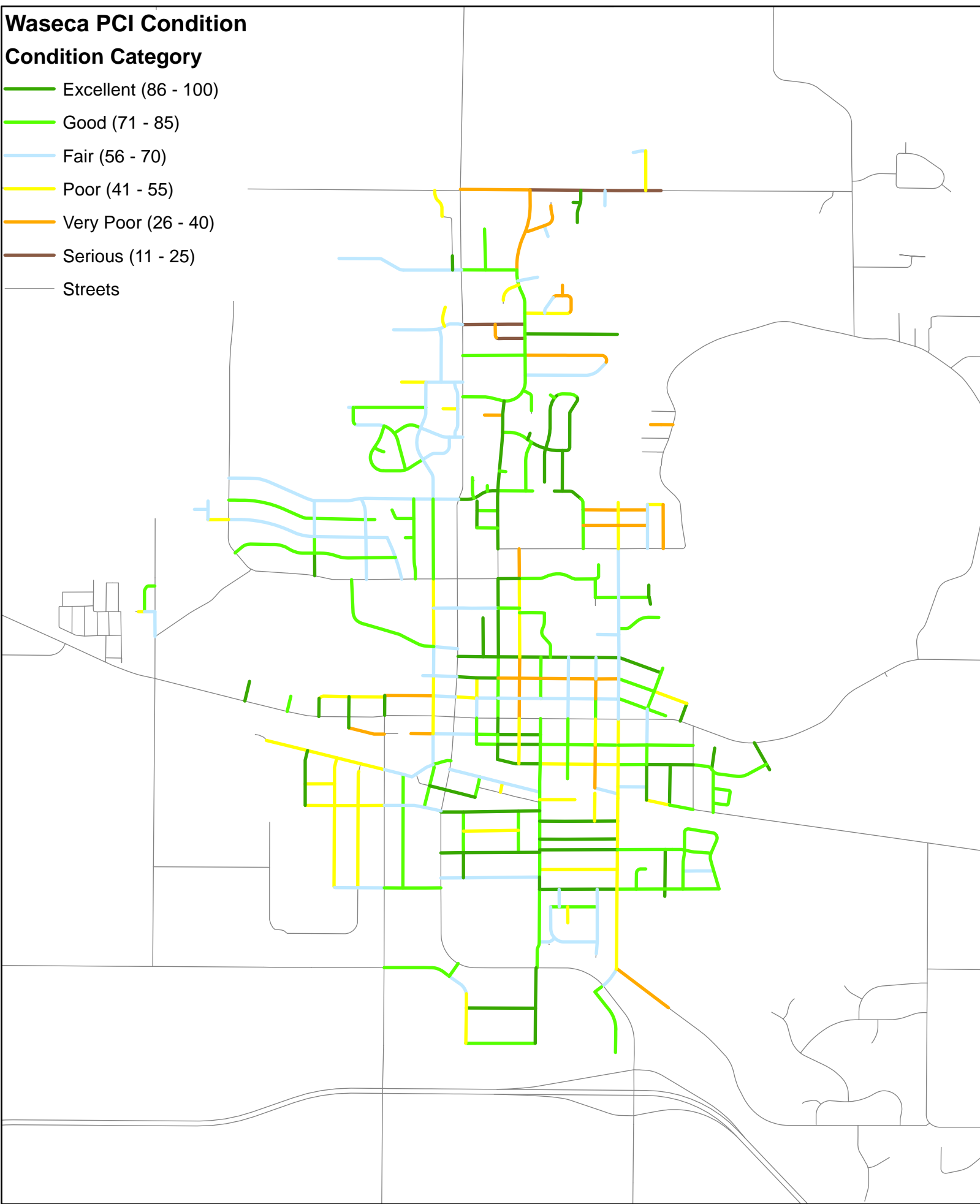
APPENDIX A

PCI Distribution Map

Waseca PCI Condition

Condition Category

- Excellent (86 - 100)
- Good (71 - 85)
- Fair (56 - 70)
- Poor (41 - 55)
- Very Poor (26 - 40)
- Serious (11 - 25)
- Streets



APPENDIX B

Street Listing



City of Waseca
Street Listing
All Sections

Section #	PAVER ID	Street Name	From	To	Length (ft)	Width (ft)	Area (sq ft)	Lanes	Functional Class	Pavement Type	Inspection Date	Ride Comfort Index (RCI)	Pavement Condition Index (PCI)	Comment
2100	10ANE1	10TH AVE NE	2ND STREET NE	3RD STREET NE	350.5	33	11567	2	Local	Flexible	04/21/2020	64	84.2	
2240	10ANE2	10TH AVE NE	7TH. STREET NE	8TH. STREET NE	598.6	33	19754	2	Local	Flexible	04/21/2020	38	26.7	
2250	10ANE3	10TH AVE NE	8TH. STREET NE	9TH. STREET NE	496.7	33	16391	2	Local	Flexible	04/21/2020	28	33.7	
2270	10ANE4	10TH AVE NE	9TH. STREET NE	10TH. STREET NE	267	33	8811	2	Local	Flexible	04/21/2020	30	55	
1990	10ANW3	10TH AVE NW	10TH ST.	800 BLOCK	954	33	31482	2	Local	Flexible	04/21/2020	54	79.4	
1995	10ANW2	10TH AVE NW	800 BLOCK	7TH ST.	552	33	18216	2	Local	Flexible	04/21/2020	54	79.4	
2000	10ANW1	10TH AVE NW	7TH ST.	CUL-DE-SAC	1026.8	33	33884	2	Local	Flexible	04/21/2020	53	77.8	
270	10ASE1	10TH AVE SE	STATE ST S	5TH ST SE	1679	33	55407	2	Collector	Flexible	04/21/2020	47	68.6	
280	10ASE2	10TH AVE SE	5TH ST SE	8TH ST SE	1318.2	33	43501	2	Local	Flexible	04/21/2020	47	41.5	
360	10ASE3	10TH AVE SE	11TH ST SE	12TH ST SE	521.9	33	17223	2	Local	Flexible	04/21/2020	49	62.5	
1400	10SNE1	10TH ST NE	3RD AVE NE	EAST ELM AVENUE	320.7	33	10583	2	Collector	Flexible	04/21/2020	77	96.7	
2280	10SNE2	10TH ST NE	10TH. AVENUE NE	8TH. AVENUE NE	749.1	33	24720	2	Local	Flexible	04/21/2020	54	38	
920	10SNW1	10TH ST NW	WEST ELM AVE.	DEAD END	344.5	33	11369	2	Local	Flexible	04/21/2020	68	88.1	
320	10SSE2	10TH ST SE	END	9TH AVE SE	794.9	33	26232	2	Local	Flexible	04/21/2020	66	86.3	
1280	10SSE1	10TH ST SE	5TH. AVENUE SE	4TH. AVENUE SE	687.3	33	22681	2	Local	Flexible	04/21/2020	67	87.4	
2060	11ANE2	11TH AVE	3RD STREET NE	END	591.8	33	19529	2	Local	Flexible	04/21/2020	64	83.6	
2070	11ACNE	11TH AVE CIR NE	11TH AVE. N.E.	CUL-DE-SAC	97.1	30	2913	2	Local	Flexible	04/21/2020	64	83.7	
2050	11ANE1	11TH AVE NE	NORTH STATE STREET	3RD STR. N.E.	697.8	35	24423	2	MSA	Flexible	04/21/2020	68	88	
2140	11ANE3	11TH AVE NE	7TH ST NE	END	493.4	32	15789	2	Collector	Flexible	04/21/2020	71	90.6	
2010	11ANW4	11TH AVE NW	10TH ST.	7TH ST.	1522.6	37	56336	2	MSA	Flexible	04/21/2020	44	64.4	
2020	11ANW3	11TH AVE NW	7TH ST.	5TH ST.	799.7	37	29589	2	MSA	Flexible	04/21/2020	47	63.8	
2030	11ANW2	11TH AVE NW	5TH ST.	3RD ST.	892.7	37	33030	2	MSA	Flexible	04/21/2020	47	63.1	
2040	11ANW1	11TH AVE NW	3RD ST.	NORTH STATE STREET	764.8	37	28298	2	MSA	Flexible	04/21/2020	40	64.8	
290	11ASE1	11TH AVE SE	5TH ST SE	8TH ST SE	1315.7	33	43418	2	Collector	Flexible	04/21/2020	66	85.7	
300	11ASE2	11TH AVE SE	8TH ST SE	660ft East of 8TH ST SE	660	33	21780	2	Collector	Flexible	04/21/2020	54	78.6	
302	11ASE3	11TH AVE SE	660ft East of 8TH ST SE	120ft East of 10TH ST SE	273	33	9009	2	Collector	Flexible	04/21/2020	54	78.6	
305	11ASE4	11TH AVE SE	120ft East of 10TH ST SE	12TH ST SE	800	33	26400	2	Collector	Flexible	04/21/2020	54	78.6	
1870	11SNW1	11TH ST NW	END	9TH AVE	315.7	33	10418	2	Local	Flexible	04/21/2020	39	64.4	
330	11SSE2	11TH ST SE	11TH AVE SE	8TH AVE SE	1016.8	33	33554	2	Local	Flexible	04/21/2020	51	76	
880	13SNW1	120TH ST	LAKE ST	5TH AVE CT NW	422.7	22	9299	2	Collector	Flexible	04/21/2020	45	69.9	
2400	12ANW2	12TH AVE NW	4TH ST NW	2ND ST NW	718.4	33	23707	2	Local	Flexible	04/21/2020	65	85	
2410	12ANW1	12TH AVE NW	2ND ST NW	13TH AVE NW	701	33	23133	2	Local	Flexible	04/21/2020	43	67.8	
230	12ASE1	12TH AVE SE	6TH ST SE	7TH ST SE	790.2	25	19755	2	Local	Flexible	04/21/2020	47	72.1	
1240	12CSE1	12TH CIR SE	12TH. STREET SE	12TH. STREET SE	776.2	33	25615	2	Local	Flexible	04/21/2020	65	84.7	
350	12SSE3	12TH ST SE	8TH AVE SE	11TH AVE SE	950	33	31350	2	Local	Flexible	04/21/2020	61	80.9	
1220	12SSE2	12TH ST SE	355TH. AVENUE	4TH. AVENUE SE	695.9	33	22965	2	Local	Flexible	04/21/2020	54	79	
1230	12SSE1	12TH ST SE	4TH. AVENUE SE	END	363.3	33	11989	2	Local	Flexible	04/21/2020	74	93.5	
2210	13ANE1	13TH AVE NE	3RD. STREET NE	4TH. STREET NE	534.1	33	17625	2	Collector	Flexible	04/21/2020	47	72.2	
2220	13ANE2	13TH AVE NE	4TH. STREET NE	6TH. STREET NE	656.8	32	21018	2	Collector	Flexible	04/21/2020	68	88.2	
2360	13ANW3	13TH AVE NW	5TH ST NW	4TH ST NW	509.2	33	16804	2	Local	Flexible	04/21/2020	45	70.4	
2440	13ANW2	13TH AVE NW	3RD ST NW	2ND ST NW	494.7	33	16325	2	Local	Flexible	04/21/2020	64	83.6	
2450	13ANW1	13TH AVE NW	2ND ST NW	HWY 13 N	744.4	33	24565	2	MSA	Flexible	04/21/2020	43	68.3	
200	13ASE1	13TH AVE SE	5TH ST SE	7TH ST SE	1026.4	28	28739	2	Local	Flexible	04/21/2020	39	63.9	
1210	13SSE1	13TH ST SE	HWY 14 (EAST ELM AVE.)	END	527.1	24	12650	2	Collector	Flexible	04/21/2020	79	98.8	
1570	14ANE1	14TH AVE NE	3RD. STREET NE	END	310.3	24	7447	2	Local	Flexible	04/21/2020	18	29.5	
2340	14ANW3	14TH AVE NW	5TH CIRCLE NW	520ft WEST OF 2ND ST NW	713	33	23529	2	Local	Flexible	04/21/2020	60	80.2	
2345	14ANW2	14TH AVE NW	520ft WEST OF 2ND ST NW	2ND ST NW	520	33	17160	2	Local	Flexible	04/21/2020	60	80.2	

City of Waseca
Street Listing
All Sections

Section #	PAVER ID	Street Name	From	To	Length (ft)	Width (ft)	Area (sq ft)	Lanes	Functional Class	Pavement Type	Inspection Date	Ride Comfort Index (RCI)	Pavement Condition Index (PCI)	Comment
2430	14ANW1	14TH AVE NW	SERVICE ROAD	DEAD END	248	20	4960	2	Local	Flexible	04/21/2020	41	47.3	
120	14ASE1	14TH AVE SE	8TH ST SE	CITY LIMIT	1102.8	30	33084	2	Collector	Flexible	04/21/2020	36	25.9	
15	14ASW1	14TH AVE SW	CURVE EAST OF RAILROAD	2ND ST SE	331	45	14895	2	MSA	Flexible	04/21/2020	62	81.9	
20	14ASW2	14TH AVE SW	2ND ST SE	ALLEY BY DELTA TRUCK	428.3	45	19274	2	Collector	Flexible	04/21/2020	43	67.6	
910	14SNW1	14TH ST NW	5TH AVE CT NW	120TH ST	575.9	29	16701	2	Local	Flexible	04/21/2020	47	72.1	
2160	15ANE3	15TH AVE NE	6TH. STREET NE	5TH. STREET NE	384.9	32	12317	2	Local	Flexible	04/21/2020	65	85.4	
2490	15ANE1	15TH AVE NE	STATE ST	3RD STREET NE	708.7	33	23387	2	MSA	Flexible	04/21/2020	46	71	
2500	15ANE2	15TH AVE NE	3RD STREET NE	4TH. CIRCLE NE	393.1	33	12972	2	MSA	Flexible	04/21/2020	51	76.3	
100	15ASE1	15TH AVE SE	2ND ST SE	5TH ST SE	1175	36	42300	2	Local	Flexible	04/21/2020	68	87.9	
2850	16ANE1	16TH AVE NE	4TH. STREET NE	701 16TH AVE NE w LOT LINE	1130	33	37290	2	Local	Flexible	04/21/2020	37	58.5	
2855	16ANE2	16TH AVE NE	701 16TH AVE NE w LOT LINE	17TH AVE NE	328	33	10824	2	Local	Flexible	04/21/2020	37	58.5	
2470	16ANW2	16TH AVE NW	END	2ND ST NW	412.2	33	13603	2	Collector	Flexible	04/21/2020	41	53.2	
2480	16ANW1	16TH AVE NW	2ND ST NW	STATE ST	625.4	43	26892	2	MSA	Flexible	04/21/2020	31	56.2	
40	16ASE1	16TH AVE SE	2ND ST SE	5TH ST SE	1179.4	36	42458	2	Local	Flexible	04/21/2020	65	84.8	
2830	17ANE1	17TH AVE NE	STATE ST	4TH. STREET NE	1059.1	33	34950	2	Collector	Flexible	04/21/2020	52	76.9	
2840	17ANE2	17TH AVE NE	4TH. STREET NE	16TH AVE NE	1464.4	33	48325	2	Local	Flexible	04/21/2020	34	34.6	
2820	18ANE1	18TH AVE NE	3RD. STREET NE	4TH. STREET NE	487.7	33	16094	2	Local	Flexible	04/21/2020	18	21.4	
2790	19ANE1	19TH AVE NE	STATE ST	4TH. STREET NE.	1057.7	33	34904	2	Collector	Flexible	04/21/2020	35	20.3	
2800	19ANE2	19TH AVE NE	4TH. STREET NE.	1050ft EAST OF 4TH ST NE	1050	33	34650	2	Local	Flexible	04/21/2020	71	90.8	
2805	19ANE3	19TH AVE NE	1050ft EAST OF 4TH ST NE	END	522	33	17226	2	Local	Flexible	04/21/2020	71	90.8	
2780	19ANW2	19TH AVE NW	END	775ft WEST OF STATE ST	416	33	13728	2	Collector	Flexible	04/21/2020	44	64.1	
2785	19ANW1	19TH AVE NW	775ft WEST OF STATE ST	STATE ST	775	33	25575	2	Collector	Flexible	04/21/2020	44	64.1	
2730	20ANE1	20TH AVE NE	4TH. STREET NE.	6TH. STREET NE.	777.6	33	25661	2	Local	Flexible	04/21/2020	41	40.7	
2750	21ANE1	21ST AVE NE	6TH. STREET NE.	5TH. STREET NE.	303.6	33	10019	2	Local	Flexible	04/21/2020	31	32.3	
2670	22ANE1	22ND AVE NE	STATE ST	4TH. STREET NE	938.6	33	30974	2	MSA	Flexible	04/21/2020	53	77.6	
2650	22ANW3	22ND AVE NW	END	WEST WALMART P/L	1146	37	42402	2	Local	Flexible	04/21/2020	37	61.9	
2655	22ANW2	22ND AVE NW	WEST WALMART P/L	SERVICE RD NW	803	37	29711	2	Collector	Flexible	04/21/2020	37	61.9	
2660	22ANW1	22ND AVE NW	SERVICE RD NW	STATE ST	185	37	6845	2	Collector	Flexible	04/21/2020	36	61.4	
2640	24ACNE1	24TH AVE CT	24TH. AVENUE NE	CULDESAC	195	33	6435	2	Local	Flexible	04/21/2020	40	64.8	
2630	24ANE1	24TH AVE NE	4TH. STREET NE	CULDESAC	752.7	33	24839	2	Local	Flexible	04/21/2020	25	34.2	
2620	25ACNE1	25TH AVE CT NE	6TH. STREET NE	CUL DE SAC	122.6	33	4046	2	Local	Flexible	04/21/2020	75	95.3	
2550	26ANE1	26TH AVE NE	STATE ST. N	4TH ST. NE	1185.2	22	26074	2	Arterial	Flexible	04/21/2020	37	26.9	
2560	26ANE2	26TH AVE NE	4TH ST. NE	7TH ST. NE	1273.2	22	28010	2	Arterial	Flexible	04/21/2020	29	16.7	
2570	26ANE3	26TH AVE NE	7TH ST. NE	CITY LIMITS	951.8	22	20940	2	Arterial	Flexible	04/21/2020	37	23	
2590	27ANE1	27TH AVE NE	8TH ST. NE	END	214.1	33	7065	2	Local	Flexible	04/21/2020	36	60.9	
980	2ANE1	2ND AVE NE	STATE ST S	2ND STREET NE	360.7	41	14789	2	MSA	Flexible	04/21/2020	21	46.3	
990	2ANE2	2ND AVE NE	2ND STREET NE	3RD STREET NE	362	41	14842	2	MSA	Flexible	04/21/2020	56	60.5	
1000	2ANE3	2ND AVE NE	3RD STREET NE	5TH ST NE	724	33	23892	2	Local	Flexible	04/21/2020	41	63.7	
1005	2ANE3	2ND AVE NE	5TH ST NE	8TH STREET NE	1324	33	43692	2	Local	Flexible	04/21/2020	41	63.7	
1010	2ANE4	2ND AVE NE	8TH STREET NE	9TH STREET NE	517.7	33	17084	2	Local	Flexible	04/21/2020	49	74.2	
1020	2ANE5	2ND AVE NE	9TH STREET NE	END	331.1	33	10926	2	Local	Flexible	04/21/2020	63	83.2	
950	2ANW3	2ND AVE NW	7TH ST NW	4TH ST NW	1127.9	27	30453	2	Local	Flexible	04/21/2020	29	40.9	
960	2ANW2	2ND AVE NW	4TH ST NW	2ND ST NW	827	41	33907	2	Local	Flexible	04/21/2020	26	40.2	
970	2ANW1	2ND AVE NW	2ND ST NW	STATE ST S	377	47	17719	2	MSA	Flexible	04/21/2020	45	69.6	
1100	2ASE1	2ND AVE SE	SOUTH STATE ST.	2ND. STREET SE	395.9	41	16232	2	MSA	Flexible	04/21/2020	34	58.9	
1110	2ASE2	2ND AVE SE	2ND. STREET SE	3RD. STREET SE	361	41	14801	2	MSA	Flexible	04/21/2020	46	71	
1120	2ASE3	2ND AVE SE	3RD. STREET SE	5TH. STREET SE	724	33	23892	2	Local	Flexible	07/04/2020	80	100	Planned Mill and Overlay 2020

City of Waseca
Street Listing
All Sections

Section #	PAVER ID	Street Name	From	To	Length (ft)	Width (ft)	Area (sq ft)	Lanes	Functional Class	Pavement Type	Inspection Date	Ride Comfort Index (RCI)	Pavement Condition Index (PCI)	Comment
1060	2ASW3	2ND AVE SW	WSIDE OF OLD RAILROAD ROW	4TH STREET SW	228	30	6840	2	Local	Gravel				Gravel - No Inspection
1070	2ASW5	2ND AVE SW	W. LOT LINE OF KWIK TRIP	6TH ST SW	129	24	3096	2	Local	Flexible	04/21/2020	22	38.2	
1075	2ASW4	2ND AVE SW	4TH STREET SW	W. LOT LINE OF KWIK TRIP	491	24	11784	2	Local	Flexible	04/21/2020	22	38.2	
1080	2ASW2	2ND AVE SW	OLD RAILROAD ROW	2ND ST SW	375.7	41	15404	2	Local	Flexible	04/21/2020	21	32.9	
1090	2ASW1	2ND AVE SW	2ND ST SW	SOUTH STATE STREET	342.1	43	14710	2	MSA	Flexible	04/21/2020	43	68	
1430	2SNE1	2ND ST NE	EAST ELM AVENUE	2ND AVENUE NE	341	47	16027	2	Local	Flexible	04/21/2020	42	67.2	
1440	2SNE2	2ND ST NE	2ND AVENUE NE	3RD. AVENUE NE	341	47	16027	2	Local	Flexible	04/21/2020	29	53.9	
1690	2SNE3	2ND ST NE	4TH. AVENUE NE	END	660	33	21780	2	Local	Flexible	04/21/2020	69	88.5	
2080	2SNE5	2ND ST NE	11TH AVE. N.E.	CUL-DE-SAC	353.1	30	10593	2	Local	Flexible	04/21/2020	63	82.5	
2090	2SNE4	2ND ST NE	9TH. AVENUE NE	END	453.2	33	14956	2	Local	Flexible	04/21/2020	66	85.6	
2680	2SNE6	2ND ST NE	22ND AVE NE	NORTH END	694.7	33	22925	2	Local	Flexible	04/21/2020	46	71.3	
810	2SNW1	2ND ST NW	ELM AVE E	3 AVE NW	681.9	47	32049	2	MSA	Flexible	04/21/2020	38	44.9	
820	2SNW2	2ND ST NW	3 AVE NW	4 AVE NW	495.3	42	20803	2	MSA	Flexible	04/21/2020	45	56.8	
830	2SNW3	2ND ST NW	4 AVE NW	7 AVE NW	1151.7	33	38006	2	MSA	Flexible	04/21/2020	29	44.5	
840	2SNW4	2ND ST NW	7 AVE NW	11 AVE NW	1356.2	37	50179	2	MSA	Flexible	04/21/2020	47	72.4	
850	2SNW5	2ND ST NW	11 AVE NW	13TH AVE NW	1292	33	42636	2	MSA	Flexible	04/21/2020	44	55.5	
855	2SNW5	2ND ST NW	13TH AVE NW	16 AVE NW	792	33	26136	2	MSA	Flexible	04/21/2020	44	55.5	
860	2SNW6	2ND ST NW	16 AVE NW	19 AVE NW	913.9	54	49351	2	Local	Flexible	04/21/2020	37	62.3	
870	2SNW7	2ND ST NW	19 AVE NW	END	336.8	38	12798	2	Local	Flexible	04/21/2020	30	54.6	
30	2SSE7	2ND ST SE	ALLEY BY DELTA TRUCK	16TH AVE SE	842.2	36	30319	2	Collector	Flexible	04/21/2020	48	41.8	
110	2SSE6	2ND ST SE	UNIVERSITY DR	STATE ST S	265.5	41	10886	2	MSA	Flexible	04/21/2020	48	73.4	
410	2SSE5	2ND ST SE	10TH AVE SE	9TH AVE SE	426.6	33	14078	2	Local	Flexible	07/04/2020	75	95	Planned Seal Coat 2020
420	2SSE4	2ND ST SE	9TH AVE SE	7TH AVENUE SE	691.7	33	22826	2	Local	Flexible	04/21/2020	52	76.5	
770	2SSE3	2ND ST SE	6TH. AVENUE SE	5TH. AVENUE SE	354	37	13098	2	Local	Flexible	04/21/2020	51	76.1	
1410	2SSE2	2ND ST SE	2ND. AVENUE SE	2ND. AVENUE SE	166	43	7138	2	Local	Flexible	04/21/2020	48	73.2	
1420	2SSE1	2ND ST SE	2ND. AVENUE SE	EAST ELM AVENUE	275	42	11550	2	Local	Flexible	04/21/2020	47	71.7	
780	2SSW3	2ND ST SW	7TH.AVENUE SW	5TH AVENUE SW	750.1	33	24753	2	Local	Flexible	04/21/2020	64	84.2	
790	2SSW2	2ND ST SW	5TH AVENUE SW	2ND AVENUE SW	521.2	41	21369	2	MSA	Rigid	04/21/2020	36	60.99	
800	2SSW1	2ND ST SW	2ND AVENUE SW	ELM AVE E	305.6	47	14363	2	MSA	Flexible	04/21/2020	51	53.1	
1350	3ANE1	3RD AVE NE	STATE ST	2ND STREET NE	342	47	16074	2	Local	Flexible	07/04/2020	80	100	Planned Mill and Overlay 2020
1360	3ANE2	3RD AVE NE	2ND STREET NE	3RD STREET NE	362	41	14842	2	Local	Flexible	07/04/2020	80	100	Planned Mill and Overlay 2020
1370	3ANE3	3RD AVE NE	3RD STREET NE	5TH ST NE	724	33	23892	2	Collector	Flexible	04/21/2020	24	35.5	
1375	3ANE3	3RD AVE NE	5TH ST NE	8TH STREET NE	1324	33	43692	2	Collector	Flexible	04/21/2020	24	35.5	
1380	3ANE4	3RD AVE NE	8TH STREET NE	9TH STREET NE	640.5	33	21137	2	Collector	Flexible	04/21/2020	49	73.5	
1390	3ANE5	3RD AVE NE	9TH STREET NE	10TH STREET NE	590.6	33	19490	2	Collector	Flexible	04/21/2020	16	40.6	
1330	3ANW2	3RD AVE NW	DEAD END	2ND ST NW	183.2	29	5313	2	Local	Flexible	04/21/2020	46	59.9	
1340	3ANW1	3RD AVE NW	2ND ST NW	STATE ST	395.7	47	18598	2	Local	Flexible	04/21/2020	40	65.1	
1130	3ASE1	3RD AVE SE	2ND. STREET SE	3RD. STREET SE	359.2	41	14727	2	Local	Flexible	04/21/2020	50	74.8	
1140	3ASE2	3RD AVE SE	3RD. STREET SE	5TH. STREET SE	723.4	31	22425	2	Collector	Flexible	07/04/2020	80	100	Planned Mill and Overlay 2020
1150	3ASE3	3RD AVE SE	5TH ST SE	8TH ST SE	1324	33	43692	2	Collector	Flexible	04/21/2020	55	79.8	
1155	3ASE3	3RD AVE SE	8TH ST SE	11TH. STREET SE	1275	33	42075	2	Collector	Flexible	04/21/2020	55	79.8	
1480	3SNE1	3RD ST NE	EAST ELM AVENUE	2ND AVENUE NE	341	41	13981	2	MSA	Flexible	04/21/2020	53	77.62	
1490	3SNE2	3RD ST NE	2ND AVENUE NE	3RD AVENUE NE	341	41	13981	2	MSA	Flexible	04/21/2020	58	81	
1500	3SNE3	3RD ST NE	3RD AVENUE NE	4TH. AVENUE NE	361.6	41	14826	2	MSA	Flexible	04/21/2020	62	82.4	
1510	3SNE4	3RD ST NE	4TH. AVENUE NE	6TH. AVENUE NE	831	41	34071	2	MSA	Flexible	07/04/2020	80	100	Planned Mill and Overlay 2020
1520	3SNE5	3RD ST NE	6TH. AVENUE NE	7TH. AVENUE NE	496.8	41	20369	2	MSA	Flexible	07/04/2020	80	100	Planned Mill and Overlay 2020
1540	3SNE7	3RD ST NE	8TH. AVENUE NE	10TH AVENUE NE	647.8	41	26560	2	MSA	Flexible	07/04/2020	80	100	Planned Mill and Overlay 2020

City of Waseca
Street Listing
All Sections

Section #	PAVER ID	Street Name	From	To	Length (ft)	Width (ft)	Area (sq ft)	Lanes	Functional Class	Pavement Type	Inspection Date	Ride Comfort Index (RCI)	Pavement Condition Index (PCI)	Comment
1550	3SNE8	3RD ST NE	10TH AVENUE NE	11TH AVENUE NE	340.4	41	13956	2	MSA	Flexible	07/04/2020	80	100	Planned Mill and Overlay 2020
1560	3SNE9	3RD ST NE	11TH AVENUE NE	414ft SOUTH OF 15TH AVE NE	1117	41	45797	2	MSA	Flexible	04/21/2020	68	88	
1565	3SNE10	3RD ST NE	414ft SOUTH OF 15TH AVE NE	15TH AVE NE	414	41	16974	2	MSA	Flexible	04/21/2020	68	88	
2810	3SNE11	3RD ST NE	19 AVE NE	18 AVE NE	234.4	33	7735	2	Local	Flexible	04/21/2020	41	39.6	
1920	3SNW1	3RD ST NW	7 AVE NW	11TH. AVE NW	1362.1	33	44949	2	Collector	Flexible	04/21/2020	54	78.7	Planned Seal Coat 2020
2370	3SNW2	3RD ST NW	4TH ST NW	12 AVE NW	866.4	33	28591	2	Local	Flexible	04/21/2020	54	78.7	
740	3SSE4	3RD ST SE	5TH AVE SE	ALLEY	168.1	25	4203	2	Local	Flexible	04/21/2020	30	55	
1450	3SSE3	3RD ST SE	4TH. AVENUE SE	3RD. AVENUE SE	258.2	33	8521	2	Collector	Flexible	04/21/2020	68	88.2	
1460	3SSE2	3RD ST SE	3RD. AVENUE SE	2ND. AVENUE SE	166	41	6806	2	Collector	Flexible	04/21/2020	62	82.3	
1470	3SSE1	3RD ST SE	2ND. AVENUE SE	EAST ELM AVENUE	275	43	11825	2	MSA	Flexible	04/21/2020	68	88.2	
450	3SSW2	3RD ST SW	JOHNSON AVE.	7TH AVE SW	1403.9	45	63176	2	Local	Flexible	04/21/2020	59	73.5	
460	3SSW1	3RD ST SW	7TH AVE SW	5TH AVE SW	527.6	45	23742	2	Local	Flexible	04/21/2020	71	84.4	
1660	4ANE1	4TH AVE NE	STATE ST	4TH. STREET NE	1046.7	33	34541	2	Collector	Flexible	07/04/2020	75	95	
1670	4ANE2	4TH AVE NE	4TH. STREET NE	8TH. STREET NE	1686.3	33	55648	2	Collector	Flexible	04/21/2020	69	88.7	
1680	4ANE3	4TH AVE NE	8TH. STREET NE	9TH. STREET NE	761.2	33	25120	2	Local	Flexible	04/21/2020	68	87.7	
1630	4ANW3	4TH AVE NW	7TH AVE NW	BIKE PATH	1657.6	25	41440	2	Local	Flexible	04/21/2020	49	73.8	
1640	4ANW2	4TH AVE NW	BIKE PATH	2ND ST NW	448.4	33	14797	2	Local	Flexible	04/21/2020	52	77.1	Planned Seal Coat 2020
1650	4ANW1	4TH AVE NW	2ND ST NW	STATE ST	406.7	33	13421	2	Local	Flexible	04/21/2020	43	68.1	
1160	4ASE1	4TH AVE SE	3RD. STREET SE	5TH. STREET SE	733	33	24189	2	Collector	Flexible	04/21/2020	71	90.7	
1170	4SSE2	4TH AVE SE	5TH. STREET SE	8TH. STREET SE	1324.6	33	43712	2	Collector	Flexible	04/21/2020	33	46.9	
1180	4SSE5	4TH AVE SE	8TH. STREET SE	9TH. STREET SE	486.4	33	16051	2	Collector	Flexible	04/21/2020	55	79.7	
1190	4SSE3	4TH AVE SE	9TH. STREET SE	11TH. STREET SE	789.8	33	26063	2	Collector	Flexible	04/21/2020	69	89	
1200	4SSE4	4TH AVE SE	11TH. STREET SE	13TH. ST	1347.6	33	44471	2	Collector	Flexible	04/21/2020	64	84.1	
2860	4CIRNE1	4TH CIR NE	4TH. STREET NE	END	422.2	33	13933	2	Local	Flexible	04/21/2020	54	79.2	
2460	4CIRNW	4TH CIR NW	4TH STR. N.W.	CUL-DE-SAC	177.1	33	5844	2	Local	Flexible	04/21/2020	47	71.5	
1600	4SNE1	4TH ST NE	EAST ELM AVENUE	4TH. AVENUE NE	1044.3	37	38639	2	Local	Flexible	04/21/2020	11	34.9	
1610	4SNE2	4TH ST NE	4TH. AVENUE NE	7TH. AVENUE NE	1331.7	37	49273	2	Local	Flexible	04/21/2020	30	54.7	
1620	4SNE3	4TH ST NE	7TH. AVENUE NE	8TH. AVENUE NE	506.7	37	18748	2	Local	Flexible	04/21/2020	33	34.2	
2190	4SNE4	4TH ST NE	11TH. AVENUE NE	13TH. AVENUE NE	846.5	33	27935	2	Local	Flexible	04/21/2020	47	72.3	Planned Seal Coat 2020
2510	4SNE5	4TH ST NE	4TH CIRCLE NE	18TH. AVENUE NE	889.4	33	29350	2	MSA	Flexible	04/21/2020	62	81.6	
2520	4SNE6	4TH ST NE	18TH. AVENUE NE	20TH. AVENUE NE	427.5	33	14108	2	MSA	Flexible	04/21/2020	53	77.9	
2530	4SNE7	4TH ST NE	20TH. AVENUE NE	22ND. AVENUE NE	757.4	33	24994	2	MSA	Flexible	04/21/2020	46	71.1	
2540	4SNE8	4TH ST NE	22ND. AVENUE NE	375TH AVENUE NE	1392.7	33	45959	2	Arterial	Flexible	04/21/2020	34	35.7	
1030	4SNW1	4TH ST NW	HWY 14 WEST	2ND AVE NW	338	46	15548	2	Local	Flexible	04/21/2020	71	91.3	
1910	4SNW2	4TH ST NW	9TH AVENUE NW	7TH AVENUE NW	750.2	19	14254	2	Local	Flexible	04/21/2020	41	66.4	
2380	4SNW4	4TH ST NW	13TH AVE NW	4TH CIR NW	406.4	33	13411	2	Local	Flexible	04/21/2020	53	77.8	
2390	4SNW3	4TH ST NW	4TH CIR NW	12TH AVE NW	538.4	33	17767	2	Local	Flexible	04/21/2020	53	77.6	
440	4SSE2	4TH ST SE	9TH AVE SE	7TH AVENUE SE	701	33	23133	2	Local	Flexible	04/21/2020	64	83.9	
1590	4SSE1	4TH ST SE	4TH. AVENUE SE	EAST ELM AVENUE	771	33	25443	2	Local	Flexible	04/21/2020	27	45	
890	5ACTNW1	5TH AVE CT NW	END	14TH ST. NW	101.7	29	2949	2	Local	Flexible	04/21/2020	21	45.7	Planned Seal Coat 2020
1790	5ANE1	5TH AVE NE	8TH. STREET NE	END	364.3	33	12022	2	Local	Flexible	04/21/2020	44	69.2	
1800	5ANE2	5TH AVE NE	8TH. STREET NE	END	737.4	33	24334	2	Local	Flexible	04/21/2020	46	70.9	
900	5ANW1	5TH AVE NW	14TH ST. NW	120TH ST	178	29	5162	2	Local	Flexible	04/21/2020	32	57.1	
570	5ASE2	5TH AVE SE	8TH ST SE	7TH ST SE	401.9	33	13263	2	Local	Flexible	04/21/2020	38	63	
720	5ASE1	5TH AVE SE	SOUTH STATE STREET	5TH. STREET SE	1577.9	44	69428	2	MSA	Rigid	04/21/2020	39	63.7	
1250	5ASE3	5TH AVE SE	8TH. STREET SE	9TH. STREET SE	486.3	33	16048	2	Local	Flexible	04/21/2020	41	65.9	
1260	5ASE4	5TH AVE SE	9TH. STREET SE	10TH. STREET SE	401.6	33	13253	2	Local	Flexible	04/21/2020	46	53.5	

City of Waseca
Street Listing
All Sections

Section #	PAVER ID	Street Name	From	To	Length (ft)	Width (ft)	Area (sq ft)	Lanes	Functional Class	Pavement Type	Inspection Date	Ride Comfort Index (RCI)	Pavement Condition Index (PCI)	Comment
1270	5ASE5	5TH AVE SE	10TH. STREET SE	11TH. STREET SE	407.4	33	13444	2	Local	Flexible	04/21/2020	47	70.6	
680	5ASW3	5TH AVE SW	END	7TH STREET SW	719.9	40	28796	2	Collector	Flexible	04/21/2020	26	47.8	
690	5ASW4	5TH AVE SW	7TH STREET SW	4TH STREET SW	1345.7	40	53828	2	Collector	Rigid	04/21/2020	24	48.6	
700	5ASW2	5TH AVE SW	4TH STREET SW	2ND STREET SW	902.1	44	39692	2	MSA	Rigid	04/21/2020	42	66.7	
710	5ASW1	5TH AVE SW	2ND STREET SW	SOUTH STATE ST	313.4	44	13790	2	MSA	Rigid	04/21/2020	59	83	
2770	5CIRNE1	5TH CIR NE	21ST. AVENUE NE	NORTH CUL-DE-SAC	179.3	33	5917	2	Local	Flexible	04/21/2020	26	36.3	
2330	5CIRNW1	5TH CIR NW	END	14TH AVE. NW	79	94	7426	2	Local	Flexible	04/21/2020	35	59.7	
660	5SNE1	5TH ST NE	2ND AVE NE	4TH AVE NE	704	33	23232	2	Local	Flexible	04/21/2020	61	80.7	
670	5SNE2	5TH ST NE	4TH AVE NE	6TH AVE NE	803.8	33	26525	2	Local	Flexible	04/21/2020	61	80.7	
2170	5SNE3	5TH ST NE	15TH. AVENUE NE	END	1508.9	32	48285	2	Local	Flexible	04/21/2020	69	88.6	
2760	5SSE4	5TH ST NE	21ST. AVENUE NE	20TH. AVENUE NE	313.7	33	10352	2	Local	Flexible	04/21/2020	56	62.8	
1950	5SNW1	5TH ST NW	7TH AVE NW	11TH AVE NW	1388	33	45804	2	Collector	Flexible	04/21/2020	44	68.5	
2350	5SNW2	5TH ST NW	5TH CIRCLE NW	13TH AVE NW	290.7	33	9593	2	Local	Flexible	04/21/2020	61	80.6	
50	5SSE5	5TH ST SE	16TH AVE SE	STATE ST S	1280.2	36	46087	2	Collector	Flexible	04/21/2020	66	86.2	
60	5SSE4	5TH ST SE	STATE ST S	11TH AVE SE	1341.3	39	52311	2	MSA	Flexible	04/21/2020	53	78	
70	5SSE3	5TH ST SE	11TH AVE SE	10TH AVE SE	209.3	36	7535	2	MSA	Flexible	04/21/2020	76	96.2	
80	5SSE2	5TH ST SE	10TH AVE SE	5TH AVE SE	1444.1	36	51988	2	MSA	Flexible	04/21/2020	49	74.4	
90	5SSE1	5TH ST SE	5TH AVE SE	ELM AVE E	1249.6	36	44986	2	MSA	Flexible	04/21/2020	61	81.4	
470	5SSW2	5TH ST SW	JOHNSON AVE.	829ft North of JOHNSON AVE	829	33	27357	2	Local	Flexible	04/21/2020	49	50.3	
475	5SSW1	5TH ST SW	829ft North of JOHNSON AVE	5TH AVE SW	1154	33	38082	2	Local	Flexible	04/21/2020	49	50.3	
1710	6ANE1	6TH AVE NE	STATE ST	3RD STREET NE	691.8	33	22829	2	Local	Flexible	04/21/2020	39	64.1	
1720	6ANE2	6TH AVE NE	3RD STREET NE	4TH STREET NE	362.2	33	11953	2	Local	Flexible	04/21/2020	48	72.7	
1730	6ANE3	6TH AVE NE	4TH STREET NE	5TH. STREET NE	424.3	29	12305	2	Local	Flexible	04/21/2020	61	80.7	
1760	6ANE4	6TH AVE NE	7TH. STREET NE	8TH. STREET NE	395.7	33	13058	2	Collector	Flexible	04/21/2020	53	77.7	
1770	6ANE5	6TH AVE NE	8TH. STREET NE	9TH. STREET NE	520.8	33	17186	2	Local	Flexible	04/21/2020	48	73	
1700	6ANW1	6TH AVE NW	2ND ST NW	STATE ST	406	33	13398	2	Local	Flexible	04/21/2020	41	66.1	
730	6ASE2	6TH AVE SE	5TH. AVENUE SE	END	599	33	19767	2	Local	Flexible	04/21/2020	44	49.4	
760	6ASE1	6TH AVE SE	STATE ST S	2ND ST SE	518.5	33	17111	2	Local	Flexible	04/21/2020	68	88	
510	6SSW2	6TH AVE SW	7TH ST SW	6TH ST SW	505.9	33	16695	2	Local	Flexible	04/21/2020	37	50	
750	6ASW1	6TH AVE SW	2ND ST SW	STATE ST S	278.1	33	9177	2	Local	Flexible	04/21/2020	71	90.9	
240	6CIRSE1	6TH CIR SE	END	12TH AVE SE	271	25	6775	2	Local	Flexible	04/21/2020	29	50.4	
650	6SNE1	6TH ST NE	ELM AVE E	4TH AVE NE	1045	33	34485	2	Local	Flexible	04/21/2020	44	68.9	
2150	6SNE2	6TH ST NE	11TH. AVENUE NE	13TH AVE NE	690	32	22080	2	Collector	Flexible	04/21/2020	68	88.4	
2155	6SNE2	6TH ST NE	13TH AVE NE	15TH. AVENUE NE	926	32	29632	2	Local	Flexible	04/21/2020	68	88.4	
2610	6SNE4	6TH ST NE	CUL DE SAC	375TH. AVE	553.6	33	18269	2	Local	Flexible	04/21/2020	67	87.4	
2740	6SNE3	6TH ST NE	20TH. AVENUE NE	21ST. AVENUE NE	260.1	33	8583	2	Local	Flexible	04/21/2020	41	33.9	
1040	6SNW1	6TH ST NW	2ND AVE NW	HWY 14 WEST	341	30	10230	2	Local	Flexible	04/21/2020	79	98.8	
220	6SSE3	6TH ST SE	13TH AVE SE	11TH AVE SE	844.2	25	21105	2	Local	Flexible	04/21/2020	33	58.3	
630	6SSE2	6TH ST SE	END	4TH AVE SE	247.4	33	8164	2	Local	Flexible	04/21/2020	46	71.3	
640	6SSE1	6TH ST SE	4TH AVE SE	ELM AVE E	771	36	27756	2	Local	Flexible	04/21/2020	54	78.8	
480	6SSW3	6TH ST SW	JOHNSON AVE.	7TH AVE SW	1395.8	35	48853	2	Local	Flexible	04/21/2020	38	40.9	
490	6SSW2	6TH ST SW	7TH AVE SW	5TH AVE SW	813.9	33	26859	2	Local	Flexible	04/21/2020	49	43.1	
1050	6SSW1	6TH ST SW	HWY 14 WEST	2ND AVENUE SW	188.3	23	4331	2	Local	Flexible	04/21/2020	80	99.6	
1740	7ANE2	7TH AVE NE	3RD. STREET NE	4TH. STREET NE	362	33	11946	2	Collector	Flexible	07/04/2020	80	100	Planned Mill and Overlay 2020
1750	7ANE3	7TH AVE NE	4TH. STREET NE	7TH. STREET NE	1363.6	33	44999	2	Collector	Flexible	04/21/2020	49	73.5	
520	7ASW2	7TH AVE SW	7TH ST SW	4TH ST SW	1344.4	33	44365	2	Collector	Flexible	04/21/2020	37	53.6	
530	7ASW1	7TH AVE SW	4TH ST SW	STATE ST S	974.6	33	32162	2	Collector	Flexible	04/21/2020	43	68	

City of Waseca
Street Listing
All Sections

Section #	PAVER ID	Street Name	From	To	Length (ft)	Width (ft)	Area (sq ft)	Lanes	Functional Class	Pavement Type	Inspection Date	Ride Comfort Index (RCI)	Pavement Condition Index (PCI)	Comment
540	7ASE1	7TH AVENUE SE	STATE ST S	5TH ST SE	1679.5	33	55424	2	Collector	Flexible	04/21/2020	79	98.6	
550	7ASE2	7TH AVENUE SE	5TH ST SE	8TH ST SE	1324.4	33	43705	2	Local	Flexible	07/04/2020	75	95	Planned Seal Coat 2020
600	7SNE1	7TH ST NE	ELM AVE E	2ND AVE NE	341	33	11253	2	Local	Flexible	04/21/2020	62	81.79	
610	7SNE2	7TH ST NE	2ND AVE NE	3RD AVE NE	341	33	11253	2	Local	Flexible	04/21/2020	19	30.7	
620	7SNE3	7TH ST NE	3RD AVE NE	4TH AVE NE	363	33	11979	2	Local	Flexible	04/21/2020	41	66.1	
1810	7SNE4	7TH ST NE	END	6TH. AVENUE NE	260	20	5200	2	Local	Gravel				Gravel - No Inspection
1820	7SNE5	7TH ST NE	6TH. AVENUE NE	7TH. AVENUE NE	317.9	33	10491	2	Collector	Flexible	04/21/2020	46	70.8	
1830	7SNE6	7TH ST NE	7TH. AVENUE NE	END	228.8	28	6406	2	Local	Flexible	04/21/2020	46	70.6	
2120	7SNE7	7TH ST NE	8TH. AVENUE NE.	10TH. AVENUE NE.	661.1	33	21816	2	Collector	Flexible	04/21/2020	46	70.8	
2130	7SNE9	7TH ST NE	10TH. AVENUE NE.	11TH. AVENUE NE.	200.3	32	6410	2	Collector	Flexible	04/21/2020	65	85.3	
2600	7SNE8	7TH ST NE	CUL DE SAC	375TH AVE	259.4	33	8560	2	Local	Flexible	04/21/2020	38	62.9	
940	7SNW1	7TH ST NW	HWY 14 WEST	2ND AVE NW	308	30	9240	2	Local	Flexible	04/21/2020	71	91.1	
1960	7SNW2	7TH ST NW	7TH AVE NW	8TH AVE NW	383.4	33	12652	2	Collector	Flexible	04/21/2020	66	85.9	
1970	7SNW3	7TH ST NW	8TH AVE NW	9TH AVENUE NW	283.6	33	9359	2	Collector	Flexible	04/21/2020	52	77.2	
1980	7SNW4	7TH ST NW	9TH AVENUE NW	11TH. AVENUE NW	609.9	33	20127	2	Collector	Flexible	04/21/2020	42	56.9	
210	7SSE4	7TH ST SE	END	11TH AVE SE	1098.3	25	27458	2	Local	Flexible	04/21/2020	38	62.8	
560	7SSE3	7TH ST SE	7TH AVENUE SE	END	474.8	33	15668	2	Local	Flexible	04/21/2020	38	44.7	
580	7SSE2	7TH ST SE	5TH AVE SE	3RD AVE SE	732	33	24156	2	Local	Flexible	04/21/2020	27	28.4	
590	7SSE1	7TH ST SE	3RD AVE SE	ELM AVE E	441	33	14553	2	Local	Flexible	04/21/2020	34	40.8	
500	7SSW1	7TH ST SW	7TH AVE SW	5TH AVE SW	935.9	33	30885	2	Local	Flexible	07/04/2020	80	100	Planned Mill and Overlay 2020
1840	8ANW3	8TH AVE NW	10TH ST NW	7TH ST NW	1426.3	33	47068	2	Local	Flexible	04/21/2020	52	71.2	
1850	8ANW2	8TH AVE NW	7TH ST NW	4TH ST NW	1383.4	33	45652	2	Local	Flexible	04/21/2020	62	82.1	
1930	8ANW1	8TH AVE NW	3RD ST NW	8TH CIRCLE	145.6	33	4805	2	Local	Flexible	04/21/2020	46	70.9	
340	8ASE3	8TH AVE SE	11TH ST SE	12TH ST SE	548.3	33	18094	2	Local	Flexible	04/21/2020	50	75.4	
400	8ASE2	8TH AVE SE	5TH ST SE	8TH ST SE	1322.1	29	38341	2	Local	Flexible	07/04/2020	75	95	Planned Seal Coat 2020
430	8ASE1	8TH AVE SE	2ND ST SE	4TH ST SE	936.7	33	30911	2	Local	Flexible	04/21/2020	34	51.8	
180	8SNE1	8TH ST NE	ELM AVE E	5TH AVE NE	1435	44	63140	2	MSA	Rigid	04/21/2020	40	64.8	
185	8SNE1	8TH ST NE	5TH AVE NE	8TH AVE NE	1461	44	64284	2	MSA	Rigid	04/21/2020	40	64.8	
190	8SNE2	8TH ST NE	8TH AVE NE	END	786.4	33	25951	2	Collector	Flexible	04/21/2020	18	42.3	
2580	8SNE3	8TH ST NE	26TH. AVE. NE	27TH. AVE. NE	674.9	32	21597	2	Local	Flexible	04/21/2020	39	51.1	
930	8SNW1	8TH ST NW	WEST ELM AVE.	DEAD END	266	33	8778	2	Local	Flexible	04/21/2020	52	76.9	
130	8SSE6	8TH ST SE	END	STATE ST S	1280.8	26	33301	2	Local	Flexible	04/21/2020	61	81	
140	8SSE5	8TH ST SE	STATE ST S	14TH AVE SE	363.1	41	14887	2	MSA	Flexible	04/21/2020	40	65.4	
150	8SSE4	8TH ST SE	14TH AVE SE	11TH AVE SE	1337	41	54817	2	MSA	Flexible	04/21/2020	35	41.2	
152	8SSE4	8TH ST SE	11TH AVE SE	RAILROAD TRACK	1566	41	64206	2	MSA	Flexible	04/21/2020	35	41.2	
155	8SSE3	8TH ST SE	RAILROAD TRACK	4TH AVE SE	573	41	23493	2	MSA	Flexible	04/21/2020	35	41.2	
160	8SSE2	8TH ST SE	4TH AVE SE	3RD AVE SE	330	33	10890	2	MSA	Flexible	04/21/2020	47	44	
170	8SSE1	8TH ST SE	3RD AVE SE	ELM AVE E	441	33	14553	2	MSA	Flexible	04/21/2020	23	48.1	
2110	9ANE1	9TH AVE NE	2ND. STREET NE	3RD. STREET NE	353.6	33	11669	2	Local	Flexible	04/21/2020	65	85	
2230	9ANE2	9TH AVE NE	7TH. STREET NE	9TH. STREET NE	1094	33	36102	2	Local	Flexible	04/21/2020	28	30	
1880	9ANW4	9TH AVE NW	11TH. STREET NW	10TH ST NW	350.9	33	11580	2	Local	Flexible	04/21/2020	43	52.7	
1890	9ANW3	9TH AVE NW	10TH ST NW	7TH ST NW	1502.8	33	49592	2	Local	Flexible	04/21/2020	44	68.6	
1900	9ANW2	9TH AVE NW	7TH ST NW	4TH ST NW	1235.6	33	40775	2	Local	Flexible	04/21/2020	42	66.5	
1940	9ANW1	9TH AVE NW	3RD ST NW	9TH CIRCLE	457.8	33	15107	2	Local	Flexible	04/21/2020	52	77.4	
370	9ASE1	9TH AVE SE	STATE ST S	5TH ST SE	1679.1	33	55410	2	Collector	Flexible	07/04/2020	75	95	Planned Seal Coat 2020
380	9ASE2	9TH AVE SE	5TH ST SE	8TH ST SE	1320.7	25	33018	2	Local	Flexible	07/04/2020	75	95	Planned Seal Coat 2020
390	9ASE3	9TH AVE SE	8TH ST SE	660ft East of 8TH ST SE	660	33	21780	2	Collector	Flexible	04/21/2020	50	75.2	

City of Waseca
Street Listing
All Sections

Section #	PAVER ID	Street Name	From	To	Length (ft)	Width (ft)	Area (sq ft)	Lanes	Functional Class	Pavement Type	Inspection Date	Ride Comfort Index (RCI)	Pavement Condition Index (PCI)	Comment
392	9ASE4	9TH AVE SE	660ft East of 8TH ST SE	120ft East of 10TH ST SE	273	33	9009	2	Collector	Flexible	04/21/2020	50	75.2	
395	9ASE5	9TH AVE SE	120ft East of 10TH ST SE	12TH ST SE	663	33	21879	2	Collector	Flexible	04/21/2020	50	75.2	
1860	9CIRNW	9TH CIRCLE NW	END	11TH STREET NW	228.6	33	7544	2	Local	Flexible	04/21/2020	41	65.8	
1320	9SNE1	9TH ST NE	2ND AVE NE	END	743.2	33	24526	2	Local	Flexible	04/21/2020	49	73.5	
1780	9SNE2	9TH ST NE	END S OF 6TH AVE NE	END N OF 6TH AVE NE	335	32	10720	2	Local	Flexible	04/21/2020	72	91.5	
2260	9SNE3	9TH ST NE	8TH. AVENUE NE	10TH. AVENUE NE	748.3	33	24694	2	Collector	Flexible	04/21/2020	35	59.9	
310	9SSE4	9TH ST SE	11TH AVE SE	END	468.5	33	15461	2	Local	Flexible	04/21/2020	65	85.1	
1290	9SSE3	9TH ST SE	5TH. AVENUE SE	4TH. AVENUE SE	606.6	33	20018	2	Local	Flexible	04/21/2020	73	92.8	
1300	9SSE2	9TH ST SE	4TH. AVENUE SE	3RD. AVENUE SE	330	30	9900	2	Local	Flexible	04/21/2020	51	75.8	
1310	9SSE1	9TH ST SE	3RD. AVENUE SE	2ND AVE NE	612.6	33	20216	2	Local	Flexible	04/21/2020	45	69.6	
2710	BWCT1	BOB WHITE CT NE	4TH. STREET NE.	END OF CUL-DE-SAC	404	33	13332	2	Local	Flexible	04/21/2020	36	42	
2180	BJCT1	BONNIE JEAN CT NE	6TH. STREET NE.	END	85.2	97	8264	2	Local	Flexible	04/21/2020	62	82.3	
2320	ELKA1	ELKDOM AVE NE	CLEAR LAKE DRIVE	END	397.1	20	7942	2	Local	Gravel				Gravel - No Inspection
2310	HLCA1	HILLCREST AVE NE	CLEAR LAKE DRIVE	200FT WEST OF CLEAR LAKE DRIVE	200	25	5000	2	Local	Flexible	04/21/2020	11	25.7	
2315	HLCA2	HILLCREST AVE NE	200FT WEST OF CLEAR LAKE DRIVE	END	181	25	4525	2	Local	Flexible	04/21/2020	11	25.7	
2290	IDWA1	IDLEWOOD AVE NE	CLEAR LAKE DRIVE	END	359.5	20	7190	2	Local	Gravel				Gravel - No Inspection
250	JOHNASW1	JOHNSON AVE.	6TH ST SW	4TH ST SW	843.8	39	32908	2	Collector	Flexible	04/21/2020	50	68.3	
260	JOHNASW2	JOHNSON AVE.	4TH ST SW	STATE ST S	960.9	41	39397	2	MSA	Flexible	04/21/2020	63	83.3	
2300	LKVA1	LAKEVIEW AVE	CLEAR LAKE DRIVE	END	463.5	20	9270	2	Local	Gravel				Gravel - No Inspection
1580	LLCT1	LILAC CT	3RD. STREET NE.	END	109.6	80	8768	2	Local	Flexible	04/21/2020	53	78.2	
2720	PTCTNE1	PTARMIGN CT NE	4TH. STREET NE.	END OF CUL-DE-SAC	344.3	33	11362	2	Local	Flexible	04/21/2020	37	61.9	
2200	RSCT1	ROSE CT	13TH. AVENUE NE	END	114.5	80	9160	2	Local	Flexible	04/21/2020	66	86.4	
2420	SRNW1	SERVICE RD NW	13TH AVE NW	212ft North of 13TH AVE NW	212	20	4240	2	Local	Flexible	04/21/2020	35	60.3	
2422	SRNW2	SERVICE RD NW	212ft North of 13TH AVE NW	628ft North of 13TH AVE NW	416	20	8320	2	Local	Flexible	04/21/2020	35	60.3	
2425	SRNW3	SERVICE RD NW	628ft North of 13TH AVE NW	16TH AVE NW	321	20	6420	2	Local	Flexible	04/21/2020	35	60.3	
2690	SRNW4	SERVICE RD NW	22ND AVE NW	ITRON LOT (210 NORTH)	241.7	24	5801	2	Local	Flexible	04/21/2020	66	85.8	
2700	SRNW5	SERVICE RD NW	ITRON NORTH P/L	COUNTY ROAD # 5	477.1	24	11450	2	Local	Flexible	04/21/2020	24	41.4	
10	UNIVA1	UNIVERSITY DR	128TH ST	CURVE EAST OF RAILROAD	817	45	36765	2	MSA	Flexible	04/21/2020	62	81.9	