

Waseca Downtown Historic District Virtual Walking Tour

Building Address: **123 State Street North**

Built circa 1906

Occupied by:

- Farmer's National Bank (1906-1930s?)
- People's State Bank (1920?-1940s)
- Waseca Post Office (rear of building) (1906-1927)
 - Post Office was originally located in 1885 at 204 State Street North before moving to 123 State Street North in 1906. In 1927, the Post Office moved to the Lower building and later to the present building in 1936. However, the remnants of the Post Office can still be found on the back wing of the building.
- Office space (rear of building) (1930s-1940s)
- E.F. Johnson Museum (??-1915)
- Speckled Hen retail store (??-present)

This is a two-story Neo-Classical Revival building originally constructed for the Farmer's National Bank in 1906. The building is faced with cream-colored brick and a projecting cornice has been wrapped in metal. A low parapet with metal coping tops the cornice. The corners have heavy piers with brickwork resembling quoins. The primary entrance has classical detailing, including four heavy pilasters with Corinthian capitals supporting an entablature with a projecting cornice. The door is centered between the pilasters and framed by four, narrow, fluted pilasters with Corinthian capitals. There are two large commercial windows framed by egg-and-dart surrounds flanking the entrance. A secondary entrance on the south end of the east elevation has a glass door and a metal frame leading to the second story. The windows on the second story have jack arches with brick keystones and stone sills. The window openings have replacement, one-over-one sashes. The north elevation retains its original window openings with jack arches and decorative brick banding. There is a second entrance at the west end of the north entrance consisting of two matching bays with doorways under round arches. Two entrances frame three windows with transoms that are separated by pilasters with Doric capitals. The building's rear has a two-story addition faced

with common brick (this addition housed the Post Office – it was built as a one-story addition, but a second story was added by 1919).

Photos of 123 State Street North

*From the Waseca County Historical Society Archives



1890 approximate – This is a postcard that is labeled from “1890 Approximate” but since Farmer’s National Bank is clearly in the photo (on the left) and wasn’t built until 1906, this photo was probably taken between 1906-1908. This is a unique panoramic view that shows Waseca’s Main Street (now State Street) down both sides. We also have a view down the old Wood Street (now 2nd Street NW). Visible in the photo are Farmer’s National Bank, Live Oak Pharmacy, and Simons Cigars & Tobacco. This photo was scanned in two parts. The other half is below.



This is the other half of the above photo. Since Preston & Stucky’s Drug Store is still included in this picture (the drug store burned in 1908), it’s assumed that this photo was taken between 1906 (when Farmer’s National Bank was built) and 1908 (when the Drug Store fire occurred).



1908 – Postcard depicting the aftermath of a fire at Preston & Stucky Drug Store. You can see the Farmer’s National Bank building next to the drug store. The façade of this building is minimally unchanged since it was built in 1906. Also visible is the entrance to the Waseca Post Office.



1912 – Farmers National Bank is on the corner. Great photo showing the west side of Waseca's main street at this time. Awnings have been added to several windows.



Circa 1915 – A great photo showing the style of the building as well as the entrance to the bank and the separate entrance to the Post Office. The window awnings have been removed.



Circa 1920 – Possible that this picture was taken in the 1930s as records indicate Farmer’s National Bank occupied this space until the 1930s and then another bank took over; however, that information could be incorrect and the stated date for this photograph is approximately 1920. This postcard is labeled “Peoples State Bank and Post Office”. You can also see the rear of the building with the Post Office wing. At some point the Post Office wing was expanded to a second story.

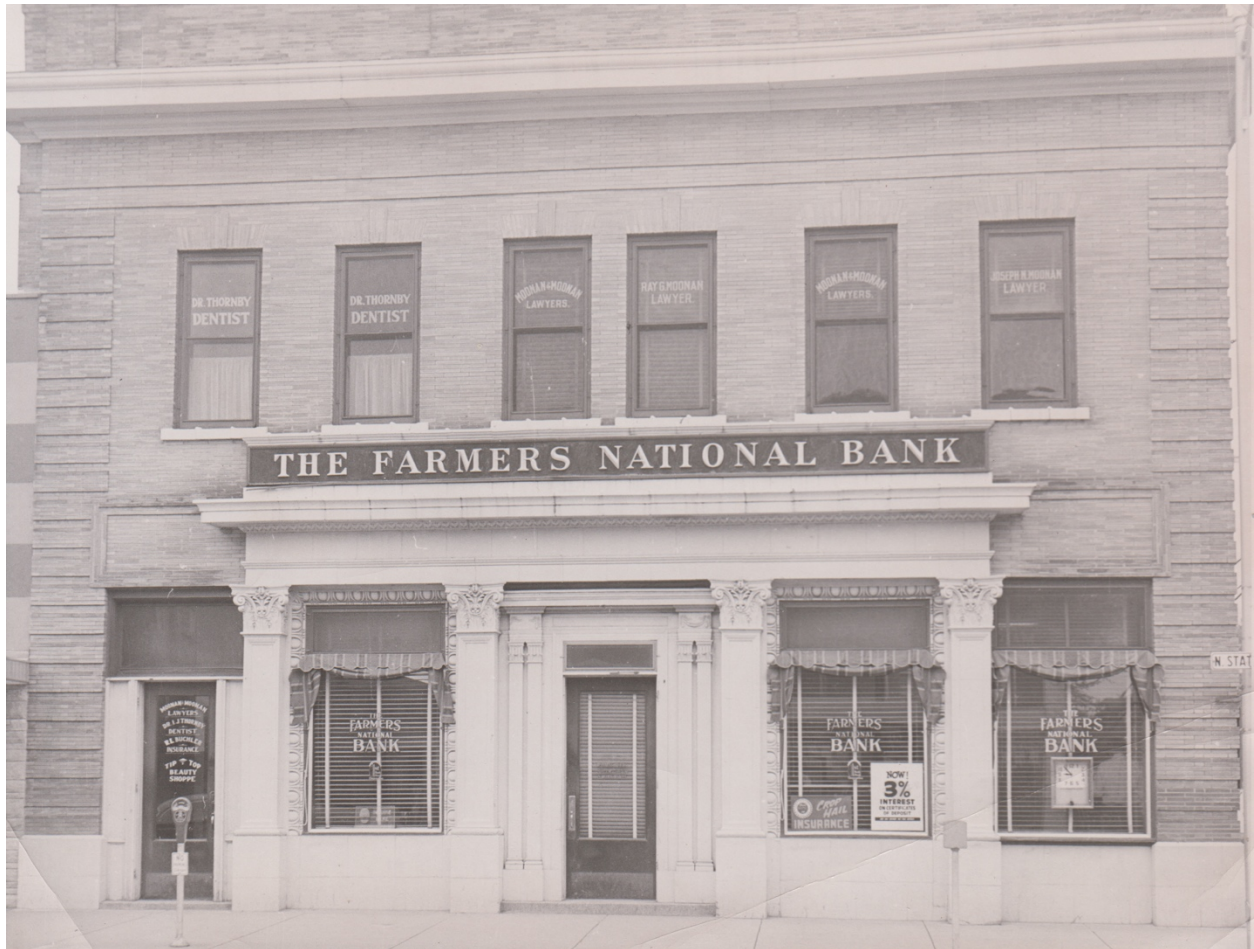


Photo undated – unsure of the date of this photo, but at some point “Peoples State Bank” reverted to “Farmers National Bank.” Also, at some point the entrance moved to the center of the 4 columns rather than 2 entrances evenly spaced between the columns. There is another entrance added on the far left to access the upper story which at this time housed several businesses.



1998 – Looking south on State Street towards Elm Ave. The building appears unoccupied at this period.



2015 – The building housed the E.F. Johnson company museum for several years, eventually closing in 2015 and moving the museum to its corporate headquarters in Texas. This photo illustrates the main changes to the building – the façade has been altered to have one central entrance rather than two entrances. There is a second entrance on the far left to access the second story.