

Trowbridge Park Band Shell (Grand Stand) in Waseca, MN

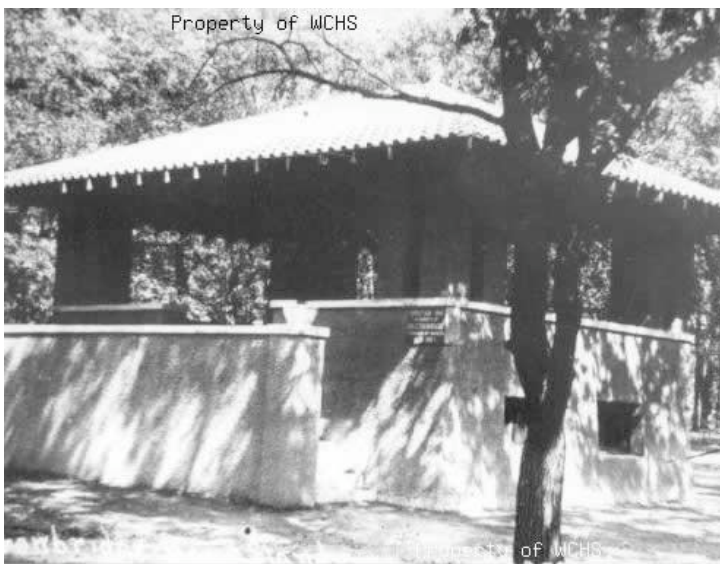
October 1, 2009

Background

The band shell or grandstand in what was called at the time, City Park, Waseca, Minn., now Trowbridge Park was built in honor of Ira Trowbridge, one of Waseca's founders. The band shell is located off the northeast corner of the current Public Library building. The Trowbridge house is located across the street to the south of Trowbridge Park.

The band shell was erected in 1915. A plaque on the corner of the band shell shows the date and memorial note.

The structure has been left mostly untouched except for painting and covering the windows on the lower level.



Above: Picture from around 1920

Left: Picture from around 1916.

City Mining State Zinc Co

LI *Waseca Journal* Wed April 21 1915 Page 1

WASECA, MINNESOTA

In Respect

Stephen H. Preston
 afternoon at 3
 Congregational
 Rev. W. E. Gering. Rev. I. L.
 church offered the
 double quartette
 an, E. Watson, M.
 land, Paul Stucky,
 Bullard and H. Is-
 over of My Soul"
 Me." Mrs. V. G.
 tucky as accompa-
 ws the Way."
 the Twenty-third
 elections from the
 e with feeling eu-
 Mr. Preston from
 and thou shalt be
 seat will be emp-
 ows sent to the
 on were tastefully
 urch, and at the
 nies were taken to
 re the grave was
 l the earth around

lard, W. A. Zetter-
 W. A. Clement, A.
 ailer were the act-
 hile the G. A. R.
 eceased were the
 The church was
 Preston's friends,
 e Will Vinton and

A Handsome Band-Stand

The city park is assured of a handsome band-stand, the joint gift of Mrs. W. G. Ward and Mrs. J. H. Jenkins as a memorial to their father, the late I. C. Trowbridge. In consideration of this gift the city park will be named "Trowbridge Park."

The band-stand will cost about \$1500. It will be built of concrete and absolutely fireproof. The dimensions will be 28 feet by 20 feet. The concrete work will be done by J. A. Erickson & Son.

The basement will be divided up into toilet rooms, a store room and a confectionery stand. The upper part will consist of a platform for the band.

It is expected that excavation for the basement will begin this week, and it is hoped to have the stand ready for the weekly band concerts which will commence about the middle of May.

The generous gift of Mesdames Ward and Jenkins will certainly be appreciated by the people of this city.

Your Neighboring City.

The best way to form an impression of a neighboring city is to look at its newspapers. If these journals are poorly printed and sloppily written, and if there is little advertising the community is invariably run down. If the newspapers have a clean type appearance, and show the ex-

Commercial Club Meet

Some 25 or 30 attended the meeting of the Commercial Club last evening. The meeting was called to order by the newly elected president, Dr. H. G. Blanchard, and the minutes were taken by the new secretary, C. C. Graham.

The second Monday night of the month was fixed as the regular meeting night of the club for the coming year. To make these meetings successful it is necessary that they be fully attended so as to have a full presentation of the business and professional life of the city, and it was moved and carried that the members be asked to pledge themselves to attend the regular monthly meetings for a period of six months. Nearly all the members at the meeting accepted this pledge.

The president announced that the next meetings would be called to order promptly on time—8 o'clock—and that each meeting would be continued for a longer period than the present hour. It is proposed to have time for each meeting well in advance and dispose of it promptly. It was also moved and carried that all members of the Club be willing to give one month to the discussion of public matters that concern the welfare of the city and county.

It is the desire of the office of the Commercial Club members to make the Club more representative of the business and

Current Project

Mike Parry is working with the Rotary Club and they are interested in fixing up the band shell. Mike talked with Les Tlougan several months ago and was encouraged to work with the Historical Society and the HPC.

Goal of Rotary Club

The desire is to make the band shell more usable. It is currently not being used for much of anything.

Side Walls and Railings

The current walls surrounding the main platform are 3' tall and make it hard for viewers to see who is in the band shell. They would like to cut down the side walls and replace them with iron railings. An alternative would be to use portable staging inside the band shell to raise the performers, but this may require a higher railing to meet code? Could a railing be added without taking away from the integrity of the structure?

The windows on the lower level are boarded up and we may want to put some kind of ironwork to provide additional security.

Rafters

The rafters are rotting at the edge of the roof. Fixes include stubbing in rafters to keep those that are rotting strong. This would be a visually poor option. If the open ceiling and underside of the eaves were covered with wainscoting and fascia added on the end of the eaves it would be more visually appealing. Then the question is would that be proper for restoring and maintaining the integrity of the structure? Wainscoting is already in use inside about the openings.



Interior Rafters



Eaves



Interior Wainscoting

Lighting and Electricity

There are currently no lights or electricity in the structure itself. There is a power pole about 20' to the south of the band shell with a security light and electrical box. The power pole can be removed (which would be desirable), but security lighting and electricity would need to be added to the band shell.

If the rafters are covered with wainscoting, surface mounted recessed lighting could be added easily inside the band shell and on the outside corners for visibility and security. Use of motion detectors with lights would add to security so the lights would not have to remain on all night. Electrical outlets in secure locked boxes could be added inside behind the 3' walls and in the lower level.



Left: Note Power Pole on left in picture



Color

The outside walls are stuccoed concrete and appear to be original. They have been painted, but we do not know what the original color of the structure was other than “light colored” or possibly “concrete colored.” (see old photos on page 1)

The wall caps are currently a rusty red or maroon color. The old photos from 1916 and 1920 show them being very light colored.

We are looking for comments on coloring for concrete walls, wall caps, and the wood rafters.

Roof

The best we can tell the roof is original – tin – and in reasonably good condition. Nothing is planned for the roof.

